

# REAL FUTURES IN AG



**TARATAHI**  
INSTITUTE OF AGRICULTURE  
TE PŪTAHI AHUWHENUA

Step up — Push on — Go Beyond

Prospectus — 2019



# KI TE TUOHU KOE ME HE MAUNGA TEITEI

◀  
If you bow your head, let  
it be to a lofty mountain



# CONTENTS

Tuhinga —

## 01

### ● Welcome to Taratahi

- Welcome **06**
- Why Study at Taratahi? **07**
- Graduate Profiles **13**
- Research Programmes **17**

## 02

### ● What can I study?

- Taster Courses **23**
- In School Programmes **25**
- Out of School Programmes **27**
- International Students **29**
- **Foundation Programmes (Level 2) 33**
  - Primary Industry Foundation Skills **35**
  - Primary Industry Skills, V2 **36**
- **Core Skills Programmes (Level 3) 37**
  - Rural Vehicles, Machinery & Infrastructure **39**
  - Farming Systems **40**
  - Farming Systems & Equipment **41**
  - Pasture for Farming **42**
  - Rural Fencing **43**
  - Apiculture **44**
  - Equine Skills **45**
  - Sporthouse Care & Equipment **46**
  - Certificate in Agriculture **47**
  - Certificate in Apiculture **48**
  - Certificate in Equine **49**
- **Intermediate Programmes (Level 4) 51**
  - Dairy Farming **53**
  - Drystock Breeding Farming **54**
  - Foundation Certificate in Agriculture **55**
  - Certificate in Equine **56**

### ● Advanced Programmes (Level 5) 57

- Massey University Diploma in Agriculture **59**
- New Zealand Diploma in Agribusiness Management **60**
- Lincoln University Diploma in Agriculture **61**
- Central North Island Dairy Academy **62**
- Diploma for Rural Veterinary Technician **63**

## 03

### ● Where can I study?

- Where we Farm and Teach **65**
- Life on Campus **74**
- Living on campus FAQ's **77**

## 04

### ● How can I apply?

- Enrolment **79**
- Fees, Loans and Allowances **82**
- Scholarships **83**
- FAQs General **85**
- Our Values **86**





# NAU MAI HAERE MAI

Welcome —

## Welcome to the Taratahi Institute of Agriculture.

We have been helping grow tomorrow's farmers for 100 years and we hope you enjoy your experience with us, on your pathway to the future.

We use our farms as our classrooms – real learning on real farms - because there is no substitute for real-life hands on experience, to back up the necessary theory.

Real futures in Agriculture is our mantra – we are passionate about helping you grow your career in agriculture, in both on-farm and off-farm roles. We are farmers who teach and teachers who farm, backed by a national team which ensures educational quality, student support and development of high quality farms with sustainable farm practices.

Studying at with Taratahi, you can choose from many pathways to reach your peak and gain the success and lifestyle you desire. You will gain NZQA approved

qualifications while learning the life lessons and skills you need to make sound decisions about your future. You may already have experienced one or more of our Primary Industries in Schools programme (Level 1, 2) and can now continue through to Level 5 Diplomas in partnership with Massey and Lincoln Universities and the Central North Island Dairy Academy. With 8 regions and 39 delivery sites we offer areas of specialty including agriculture, equine, apiculture, sheep and beef, dairy, deer, pasture for farming, fencing, drystock breeding, farming systems, and agribusiness management.

Every year, over 2,200 students from around the world learn with Taratahi. While some of our students grow up on farms, we have a wonderful variety and diversity of students from a range of town and country backgrounds, countries and life experiences. We delight in learning from each other.

When you choose your pathway at Taratahi you are making a solid investment in your future. Taratahi graduates are sought after by employers, who value not just their practical skills, but also their

ability to transfer their learning to new situations.

Whether you undertake a residential or non-residential programme we will work with you to find your pathway to success, gaining industry knowledge and skills, and making lifelong friends and contacts.


Contact us on **0800 TARATAHI** or via our website **WWW.TARATAHI.AC.NZ** to have a chat about our programmes and how to get started in agriculture.

We look forward to welcoming you to Taratahi.

Noho ora mai,  
Nga mihi nui.

– The Taratahi Team



A large photograph of a barn interior where several students are shearing sheep. The students are wearing dark clothing and are focused on their work. The barn has a wooden floor and walls, and there are various farming equipment and signs visible. A sign in the background reads 'Farmlands Supporters of this event'. Another sign on the left says 'FUTURE FARMING'.

Wherever your peak may be in the Agricultural Industry, Taratahi provides a pathway to the summit.

# WHY STUDY AT TARATAHI?

ONE PEAK  
MANY  
PATHWAYS

We are passionate about growing the primary industries and making a difference to the world around us – environmentally, culturally, socially and commercially for the success of all

## What we do:

- We offer real learning on real farms – with access to thousands of hectares of commercial farm land
- We provide clear pathways to a future in agriculture
- We have a wealth of experience, knowledge and wisdom that we pass on to the next generation of farmers
- We provide student support to all of our students - the Student Support Team provides access to student services that include learning, health and wellbeing, advocacy and other general support.

## Study at Taratahi may be for you if you are interested in:

- Raising and working with animals
- Working outdoors in a rural environment
- Driving tractors, motorbikes, and heavy machinery
- Doing physical work and working with your hands
- Working with tools, machinery and equipment
- Business management in the primary industries
- Science and research in the primary industries

Study options start at foundation level and students have the option to learn with us up to management level qualifications. In addition to learning general farming skills, students can choose to stream into distinct career pathways.



# THE STATS



## ESTABLISHED 1919

WE'VE BEEN SUCCESSFULLY TRAINING  
KIWIS FOR ALMOST 100 YEARS!



**REAL LEARNING  
ON REAL FARMS**



**2,000**

**STUDENTS PER YEAR**  
(38% female, 62% male)



**EMPLOYMENT RATE**  
for Central North Island  
Dairy Academy



**75** **WORKING  
DOGS**



**ASSET BASE**

**6,200HA**



**EFFECTIVE LAND**

**423**

**AGRICULTURE  
IN SCHOOLS  
STUDENTS**

**150**

**NZ SCHOOLS  
RUNNING  
PROGRAMMES**



**PRODUCTS SOLD**  
(red meat, wool, velvet,  
milk solids)



**100 PLUS**  
**ACCESS FARMS**



**SHORT COURSES  
PER YEAR**



**DIPLOMAS &  
CERTIFICATES**



# REAL LEARNING REAL FARMS



## REAL FOCUS

Step up, push on. Take yourself further and study a Massey or Lincoln University Diploma with Taratahi.



## REAL OPPORTUNITIES

Jump start your career in Ag with the experience and knowledge gained at Taratahi.



## REAL ADVENTURES

Not afraid to get your hands dirty? Discover the Ag industry first hand at New Zealand's leading Agriculture educator.

## REAL PEOPLE

Find your place in Taratahi's family of like-minded, fun and friendly, staff and students.



## REAL SKILLS

Get ahead of the herd with skills developed at Taratahi by those who have been there, done that.





# GRADUATE PROFILES



## Andrew Sulzberger

*From Taratahi to 2017  
Best Dairy Farmer*

A Taratahi graduate from the early 90s, Andrew Sulzberger's years of further study and management of the family farm has culminated in winning the 2017 Dairy Business of the Year title.

Andrew is sixth generation on the 115ha, 320 cow Taranaki farm and was steered towards Taratahi as a youngster by his parents, who were concerned he was drifting a bit.

"They were right," Andrew says. "It really helped to be taught by someone other than Mum and Dad. It gave me a different way of looking at things." Plans to do the Massey Diploma in Agriculture were delayed by a serious recreational back injury but after his recovery it was completed. "Then I thought I might carry on with a degree in Applied Science (Ag) just in case I had back issues later as it gave me options for consultancy."

Andrew says dairying is a very rewarding job. "You get such a variety. Whether it's animals, machinery, or simply the outdoor nature of the work, there's always a sense of achievement."

Andrew and wife Sibylle have a long-term goal to continue farming while balancing family life. "It's a great place to hunt, ride bikes or horses and raise our

three daughters – the perfect life really, we're very grateful."

Andrew has had many competitive successes over the years as the Taranaki representative in the Young Farmer of the Year but the latest title is the icing on the cake. "We were very proud to be awarded Most Resilient System; Taranaki Best Financial Performance; Top Performing Low Input Business; and the overall Supreme Award."



## Jeremy Packard

*Keeping it in the family*

The lure of home – a seventh-generation Golden Bay dairy farm – is a strong one for Jeremy Packard.

Jeremy completed a Sheep and Beef Level 3 course at Taratahi's Wairarapa residential campus in 2015. "I loved Taratahi," Jeremy says. "It has a real family atmosphere, the course was really interesting and I met lots of great people." He scooped up some significant prizes, winning the Student Leadership and and the Technical General awards.

Keen to learn as much as he could about dairying, Jeremy attended Taratahi's prestigious Central North Island Dairy Academy programme in 2016. "It was fantastic – we had access to top farms and management systems and the tutors were really supportive and knowledgeable."

Such is the regard for the Academy that employers come looking for its graduates and Jeremy was offered a job with Dairy Central Hawke's Bay Limited, quickly becoming sole manager of a high performing herd.

Jeremy urges people who like an early start to consider the dairy industry. "It's a really rewarding lifestyle and it pays well – anywhere from \$40,000 to \$70,000 in your first year. I see a positive future – there is a move to lower inputs and better environmental management which is great for the industry and the country. It feels good to be part of that."

Jeremy is aiming to head home to Golden Bay in five years. "It's a really good farm and I know that by then I'll have the knowledge to build on the work of previous generations and to leave it in top shape for the next one."

*Jeremy was offered a job with Dairy CHB, quickly becoming sole manager of a high performing herd.*





## Hemoata Kopa

2015 and 2017 Ahuwhenua Young Māori Farmer Award Finalist

Hemoata, 21, comes from Moerewa, south of Kaikohe in Northland and is of Ngāpuhi descent. After leaving school, she studied at Taratahi in 2014 and has passed her National Certificate in Sheep and Beef (Level 3 and 4) and the Massey Diploma in Agriculture, Level 5.

Her dedication and commitment to furthering her career in agriculture has resulted in the award of an impressive number of scholarships: Dargaville Field days Scholarship, Landcorp Slingshot Scholarship, Salvation Army Scholarship and the ADB Williams Trust scholarship. Hemo's family have been farming for many generations. Initially wanting to join the army, farming was her back-up choice.

She decided to enrol at Taratahi after speaking to a Taratahi representative at a careers expo, and hasn't looked back. Since studying at Taratahi, Hemo has learned she values the outdoor lifestyle and the ability to work independently on farm. She enjoys the variety of farming – doing something different every day. Education has given her the confidence to believe she can have a high level career in agriculture.

"I come from a farming family and working in agriculture has always been an interest.

I am proud to be recognised for my accomplishments and thankful for the encouragement of my whanau and tutors at Taratahi who have got me to where I am today. It is a privilege to be an Ahuwhenua Young Māori Farmer Awards finalist" says Hemo.

*Hemoata's dedication and commitment to furthering her career in agriculture has resulted in the award of an impressive number of scholarships.*



## Alex Hood

Sights set on Germany

Alex studied at Marlborough High School where she studied equine by correspondence. She met Telford at a careers expo in Nelson and after 2 taster camps decided Telford was the place.

Alex says Telford would not be Telford without the tutors and staff, the hostel is one large family and she has made friends for life here.

Alex and her dog Ace have been on a yearlong journey together understanding how each other works their likes and dislikes, she never owned a dog before coming here. Although Alex plans to travel before settling into a

farm role Ace will only be lent to a caring farm while she is away Ace is definitely not for sale.

Alex says that "Otago can be a little dark and cold in winter however in summer its light and warm and a very nice place to live."

Alex wants to complete a Diploma in Agriculture before traveling to the UK, USA, Germany and Australia, she wants to experience farming and work at an equine centre in Germany to broaden her work experience.

Returning to New Zealand Alex wants to become a farm consultant or a farm management role.

*Alex says Telford would not be Telford without the tutors and staff, the hostel is one large family and she has made friends for life here.*





# RESEARCH PROGRAMMES

## Beef + Lamb New Zealand Genetics

### Sheep Central Progeny Test Project

The central progeny test project was instigated to ask the following questions: “Do high performance rams perform well in different environments?” and “do top performing rams on the flat still perform well on harder hill country?”

Starting in 2013, Taratahi’s previous lease farm Koromiko in the Wairarapa had been involved in an artificial insemination programme. It has now been moved to Taratahi’s Mangarata farm also in the Wairarapa to measure and record the results from 15 dual purpose sires across 800 ewes.

The farm measures and records ewe scanning, number of lambs born, ewe condition, lamb weaning weights and sex, DNA sampling of lambs and yield grade and health status. Mangarata is one of five farms around New Zealand engaged in this trial work and only one of two hill country sites.

## Beef + Lamb New Zealand Genetics

### Beef Central Progeny Test

Beef + Lamb New Zealand Genetics has launched a beef progeny test, which will show how bulls of different types perform under comparable commercial conditions. The test involves about 2,200 cows and heifers and is being run over two years, across five large properties – one of these is Tautane Station. It is hoped that the trial will establish sound genetic linkages between large numbers of stud beef flocks to aid beef breeders to make more informed decisions around which bulls to purchase and who from.



## Ewe Longevity Trial

Massey University

The trial started in 2015 and is based on Taratahi's Mangarata Farm in the Wairarapa.

The ewe longevity trial is looking at the influences of pregnancy diagnosis, birth rank, weight and body condition score at different ages, has on the length of time a ewe stays in the breeding flock.

## Remote Soil Scanning and Variable Rate Aerial Fertiliser Application

Ravensdown, AgResearch, Massey University & MPI's Primary Growth Partnership

For the next seven years, Tautane Station will host Ravensdown, AgResearch and Massey University in the development of a more comprehensive method of assessing soil nutrient status on hill country farms. The programme aims to optimise fertiliser application to New Zealand hill country through improving existing differential application capability in aircraft - and developing a decision support system which will use remote sensing technology to target fertiliser application where it will produce the most benefit.

## DairyNZ

Farmwatch

DairyNZ Farmwatch is a weekly summary of the on-farm situation observed throughout New Zealand. This information is published in regional newspapers and online. Taratahi's Dairy Unit contributes information relating to its dairy farms to this report. Information in the Farmwatch allows other farmers around the country see what is happening in the region, and use the information as a benchmark to make decisions for their farms. Information includes soil temperature, rainfall, pasture cover, pasture growth rates, cow condition and milk production.

## Research Partners





In addition to learning general farming skills, students can choose to stream into distinct career pathways.



## DA

### Dairy

Come out an expert in the responsibilities of managing the day-to-day operations of a dairy farm and set yourself up for a life in Dairy. Our programmes in Dairy are designed in consultation with industry stakeholders and offer on farm experience. Dive into milk production, dairy nutrition, farming equipment, and more.



## AP

### Apiculture

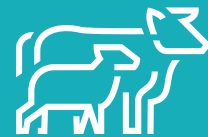
Beekeeping offers many exciting career opportunities both in New Zealand and abroad. Whether you're wishing to venture into commercial beekeeping operations or industry consultancy, Taratahi boasts the best Apiculture programmes to get you there.



## RS

### Rural Skills Workshops

These workshops are ideal for those wanting to increase their knowledge and skill base in specific areas of agriculture. From Basic Fencing to Pasture Management, they are the perfect compliment to any programme or a great addition to those already working in the industry.



## SB

### Sheep & Beef

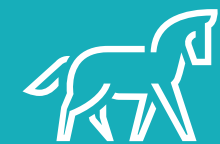
With a focus on Sheep and Beef farming, these programmes are designed for people wanting to pursue a career at any level within the farming sector. These courses stairway into the high demand of careers available within New Zealand's agricultural industry, an essential part of New Zealand's economy.



## AG

### General Skills in Agriculture

These programmes are designed to prepare students for further training in the primary industries by providing foundational skills for the work and farm environment. These vital skills include primary production tasks from water supply maintenance to safe quadbike operation.



## EQ

### Equine

Turn your passion into a life-long career. Our programmes in Equine provide individuals with the skills and knowledge needed to successfully transition into a career working with horses. From handling, riding and stabling to care and/or exercise of horses in the performance sector, our equine programmes will give you a solid grounding in all aspects of horsemanship.



# TASTER COURSES

Tasters are a great way to discover what it's like to live and learn at Taratahi.

## Residential Tasters

(Live on campus)

The Wairarapa and Telford residential campuses run four-day Taster course (April, July, October and December) in agriculture, equine and rural veterinary technicians, which are held in the school holidays. Students will be involved in a range of practical farming / equine activities during the day and fun events in the evenings. The application fee for the four day Tasters covers course fees, meals and accommodation.

### Wairarapa Taster

Dates 2019:

(for Agriculture)

- 14 April - 18 April
- 29 September - 3 October
- 15 December - 19 December

### Telford Taster Dates 2019:

(for Agriculture and Equine)

- 9 July - 13 July
- 2 October - 6 October
- 3 December - 7 December

Cost: \$100

## Regional Tasters

Regional campuses run **free** one-day Taster programmes, where students get a chance to have a go at some of the more practical aspects of our agricultural programmes.

### Waikato Regional Taster Days 2019:

- Thursday 18 April
- Thursday 11 July
- Thursday 3 October

### Taranaki Regional Taster Days:

- Friday 19 April
- Friday 12 July
- Friday 4 October

### Auckland Regional Taster Days:

- First Tuesday of every month except for January 2019.

Contact us for all other 2019 regional Taster dates, and to find out more about our regional Tasters.

Email [info@taratahi.ac.nz](mailto:info@taratahi.ac.nz), phone **0800 TARATAHI** or visit [www.taratahi.ac.nz](http://www.taratahi.ac.nz)





## OPTIONS WHILE YOU'RE AT SCHOOL

NCEA Level 2 & 3

### Grow, Feed, Protect

(GFP)

#### Grow:

- From animals to plants, our extensive subject choices have something for everyone who want to work within the sector.

#### Feed:

- We feed New Zealand. Learn valuable skills and secure your place within the limitless employment opportunities – from working outdoors to the corporate global world of agri-business.

#### Protect:

- Our new Sustainability pathway will give you the skills to begin your pathway of protecting New Zealand. From farm riparian planting through to Government agencies – your journey begins here in ensuring a sustainable future for Aotearoa.

GFP has been designed to provide senior secondary school students (Year 11 - 13) with the opportunity to build and develop skills through a range of experiences across the Primary Industry sector while also gaining credits towards their NCEA Levels 2 and 3. Our programme gives students the unique opportunity of

beginning their tertiary education within the industry while still at secondary school.

GFP has a strong focus on practical, hands on training, while also completing nationally recognised units that contribute towards NCEA Level 2 and a Vocational Pathway Award in the Primary Industry Pathway, along with the opportunity to achieve one University Entrance (UE) domain in Sustainability.

Students can be involved in the Primary Industries in Schools programme in the following four ways:

### GFP - 2

(Year 11 and Year 12, Level 2)

- Students study 3 modules per year across a range of subjects designed with the school. From Dairy, Sheep & Beef, Livestock, Equine, Riparian, Fencing, Agrichemicals – this programme has been designed to allow you to discover where your place is within the Industry.
  - Year 11:**  
1 day per week in Year 11 and Year 12.
  - Year 12:**  
1 day per week  
(3 modules total)
  - Year 12:**  
2 days per week  
(6 modules total)
- Year 13.



### GFP - 3 (Year 13, Level 3)

Taratahi now offers Year 13 secondary school students the opportunity to work towards a range of Level 3 programmes that support the achievement of NCEA Level 3 and pathway into a wide range of opportunities within the sector.

#### Practical (P) Based:

- Preparation for Livestock Farming (Level 3)
- Preparation for Fencing (Level 3)
- Preparation for Apiculture (Level 3)
- Preparation for Equine Care (Level 3)
- Sustainability P (Level 3)

#### Knowledge (K) Based:

These programmes contain a higher theoretical component and require a strong foundation of numeracy and literacy:

- Preparation for Farming (Level 3)
- Sustainability K (Level 3) (1 UE Domain)

(Available from July 2019)

## Star

Taratahi offers students in Year 11 to 13 the opportunity to participate in STAR courses. STAR courses focus on different aspects of the primary industry and are typically run as blocks of three to five days each throughout the year, though this can be tailored to meet learner needs on a case by case basis.

Topics include:

- Wool Harvesting
- Agri-Chemicals
- Agri-Vehicles
- Chainsaw Safety
- Dairy Farming
- Fencing
- Sheep Handling
- Mechanical Engineering (Wairarapa only)
- Equine Focus

## Distance Learning

(Extramural)

Theory papers on different aspects of the primary industry are available via distance learning with support from our tutors.

Topics include farming, forestry, equine, apiculture, wool harvesting, horticulture. This study is available for Years 11 to 13 and offered nationwide through five modes of delivery:

- Self-Directed learning
- Student support (staff member/parent)
- Specialist Support (standards that must be supported by a teacher with knowledge of the Primary Industry Sector)
- Resource Support through cloud and video resources
- Digital Support – Blended learning model through online classes

## Enrolment

Secondary school students need to enrol in these programmes through their school. Please speak to your Careers Advisor.

Careers Advisors need to contact the Taratahi regional office closest to their school.

For further information, download a copy of the Primary Industries in Schools prospectus from our website: [www.taratahi.ac.nz/programmes/primary-industries-in-schools](http://www.taratahi.ac.nz/programmes/primary-industries-in-schools)

Or contact us for a copy at [pita@taratahi.ac.nz](mailto:pita@taratahi.ac.nz).



# OUT OF SCHOOL PROGRAMMES

## OPTIONS AFTER YOU LEAVE SCHOOL

### Distance Learning

Our Telford campus offers a wide range of excellent programmes. Programmes are part-time, low cost and start on the first day of every month.

Each programme covers a range of topics and can be either non unit standard or unit standard based.

Telford's distance learning programmes offer the opportunity to remain employed while completing a qualification.

Once enrolled you will receive a learning package, which includes a programme information booklet, library information, study skills information, associated reading and an assessment.

#### Qualifications include:

- Telford Certificate in Dairy Knowledge **(Level 4)**
- Telford Certificate in Feed Management Knowledge **(Level 4)**
- Telford Certificate in Apiculture Knowledge **(Level 3)**
- Telford Certificate in Equine Knowledge **(Level 3)**
- Telford Certificate in Equestrian Knowledge **(Level 3)**
- Telford Certificate in Farriery Knowledge **(Level 3)**
- Telford Certificate in Agriculture Knowledge **(Level 3)**





# INTERNATIONAL STUDENTS

Each year, Taratahi welcomes international students from all over the world including Asia, Europe, Latin America, the Middle East and Africa.

Our international students take part in a number of different training programmes of various durations. These students add a special element to the atmosphere and culture at Taratahi and we greatly value their contribution.

Programmes open to international students are indicated by an International fee (in \$NZ).

## Student Support

Taratahi has a support network for international students, to help with the transition to life in New Zealand – and to make it a memorable experience.

## Code of Practice

Taratahi has agreed to observe and be bound by the Code of Practice for the Pastoral Care of International Students. Visit the NZQA website: [WWW.NZQA.GOVT.NZ](http://WWW.NZQA.GOVT.NZ) for a copy of the Code.

## Immigration and your student visa

Visit the Immigration New Zealand website: [WWW.IMMIGRATION.GOVT.NZ](http://WWW.IMMIGRATION.GOVT.NZ) for details of immigration requirements while you are studying in New Zealand.

## Medical and Travel Insurance

International students must have current medical and travel insurance while in New Zealand.

## Health Services

Visit the Ministry of Health website [WWW.MOH.GOV.T.NZ](http://WWW.MOH.GOV.T.NZ), for full details on entitlements to publicly funded health services. Most international students are not entitled to publicly funded healthcare while in New Zealand.

## Accident Insurance

Everyone in New Zealand is covered by the Accident Compensation Corporation's (ACC) no-fault scheme if they're injured in an accident. This includes children, beneficiaries, students and visitors to New Zealand. The cover they provide helps pay for the costs of the recovery period. This includes payment towards treatment, help at home, and help with income. Visit the ACC website for more details: [WWW.ACC.CO.NZ](http://WWW.ACC.CO.NZ).



For more information:  
[international@taratahi.ac.nz](mailto:international@taratahi.ac.nz)  
0800 TARATAHI  
[www.taratahi.ac.nz](http://www.taratahi.ac.nz)





## What level of English do I need to be able to study as an international student?

If you want to study either a Level 3, 4 or 5 programme, you need the score of any of the tests below. You will need to send Taratahi a copy of your certified English Language proficiency test to support your application for enrolment with us.



## ENGLISH PROFICIENCY OUTCOMES<sup>(1)</sup>

LEVEL 3	LEVEL 4	LEVEL 5
IELTS TEST <sup>(2)</sup>		
General or Academic score of 5 with no band score lower than 5	General or Academic score of 5.5 with no band score lower than 5	Academic score of 5.5 with no band score lower than 5
TOEFL PAPER-BASED TEST (PBT)		
Score of 500 (with an essay score of 4 TWE)	Score of 530 (with an essay score of 4.5 TWE)	Score of 550 (with an essay score of 5 TWE)
CAMBRIDGE ENGLISH EXAMINATIONS		
FCE or FCE for Schools with a score of 154. No less than 154 in each skill OET at Grade C in all sub-tests	FCE or FCE for schools with a score of 162. No less than 154 in each skill OET at Grade C in all sub-tests	FCE or FCE for schools with a score of 162. No less than 154 in each skill
NZCEL <sup>(3)</sup> – A. EXPIRING   B. CURRENT		
a) Level 3 (General) or (Workplace) b) Level 3 (General)	a) Level 3 (Academic) b) Level 3 (Applied)	a) Level 4 (General) or (Workplace) b) Level 4 (General) or (Employment)
PEARSON TEST OF ENGLISH (ACADEMIC)		
PToE (Academic) score of 36	PToE (Academic) score of 42	PToE (Academic) score of 42
CITY & GUILDS IESOL		
B1 Achiever with a score of 43	B2 Communicator with a score of 42	B2 Communicator with a score of 42
LANGUAGECERT		
B1 Achiever IESOL (LRWS) with PASS	B2 Communicator IESOL (LRWS) with PASS	B2 Communicator IESOL (LRWS) with HIGH PASS

(1) The listed outcomes represent the minimum scores or grades for each test or qualification that qualify a student for enrolment at each programme level. Students with higher scores or grades than required for a particular programme level may still enrol at that level. Where the entry requirements for a programme are for a higher English proficiency outcome than is listed in the relevant row of the Table for the programme level in which the student is being enrolled, the student must meet that higher level.

(2) IELTS scores used must be taken from a single IELTS Test Report Form (i.e. combining scores from more than one test is not permissible).

(3) New versions of some NZCEL qualifications, and in some cases new qualifications, were published on 13 June 2017. These are intended to replace pre-existing versions and qualifications, which have been given expiring status until discontinued on 31 December 2019.



# KICK START FOUNDATION PROGRAMMES

LEVEL

2



## Primary Industry Foundation Skills

Level 2



### Qualification:

New Zealand Certificate in Foundation Skills Level 1, New Zealand Certificate in Primary Industry Skills Level 2, NCEA Level 1 and 2 and Vocational Pathway Award in Primary Industries



**Location:** Northland, Auckland, Waikato\*



**Intake:** Various start dates throughout the year\*



**Duration:** 25 weeks, full-time  
(Includes 24 teaching weeks and 1 week holiday)



**Course Fees:** Fees free

### Programme Description

This programme prepares students for further training in the primary industries and include work and life skills for beginning a career in the primary sector. These include basic farm skills, practical production based skills, communication, teamwork, budgeting, time management, literacy and numeracy.

- Applicant must be a New Zealand citizen or permanent resident
- Applicant can meet the physical demands of farm work
- Applicant must have a reasonable level of fitness required to carry out duties on farm and can meet the physical demands of farm work.

### Entry Requirements

- Applicant must be 16 years or over and preferably not hold an existing Level 1 or 2 qualification



### Pathways

All Taratahi Level 3 programmes.

### Job Opportunities

Entry level employee in a dairy or pastoral farming context such as farm assistant.

### Programme Content

#### Content includes:

- Assist with handling livestock and stock feeding
- Basic fencing skills
- Water supply maintenance
- Safely operating a quadbike
- Working safely and managing hazards in a rural workplace

Literacy and numeracy and work-ready skills such as punctuality, reliability, presentation, communication and team work are embedded into the programme.

## Primary Industry Skills (V2)

Level 2



**Qualification:** New Zealand Certificate in Primary Industry Skills Level 2



**Location:** Northland, Waikato, Taranaki, Hawke's Bay, Wairarapa, Southland\*



**Intake:** Various start dates throughout the year\*



**Duration:** 15 weeks, full-time  
(Includes 14 teaching weeks and 1 week holiday)



**Course Fees\*:** Fees free

### Programme Description

This programme delivers training on commercial farms providing students with agricultural experience and sets the scene for working in a rural workplace and beginning a career in the primary sector. These experiences and activities include basic farm skills and practical production based skills.

or permanent resident

### Entry Requirements

- Applicant must be 16 years or over and preferably not hold an existing Level 1 or 2 qualification
- Applicant must be a New Zealand citizen

- Applicant can meet the physical demands of farm work
- Applicant must have a reasonable level of fitness required to carry out duties on farm and can meet the physical demands of farm work.

### Pathways

All Taratahi Level 3 programmes.

### Job Opportunities

Entry level employee in a dairy or pastoral farming context such as farm assistant.

### Programme Content

#### Content includes:

- Health and safety
- Vehicles
- Primary industry
- Rural equipment



\*Locations, start dates and fees are subject to approval and change. Visit [www.taratahi.ac.nz](http://www.taratahi.ac.nz) for up-to-date information.

\*Locations, start dates and fees are subject to approval and change. Visit [www.taratahi.ac.nz](http://www.taratahi.ac.nz) for up-to-date information.



# STEP UP CORE SKILLS PROGRAMMES

LEVEL

3



## Rural Vehicles, Machinery and Infrastructure

Level 3



**Qualification:** New Zealand Certificate in Agriculture (Vehicles, Machinery and Infrastructure) Level 3



**Location:** Northland, Auckland, Hawke's Bay, Taranaki, Wairarapa, Manawatu, Wellington, Telford (Balclutha)\*



**Intake:** Various start dates throughout the year\*



**Duration:** 15 weeks, full-time

*(Includes 14 teaching weeks and 1 week holiday)  
(Duration may vary between regions/locations)*

Part-time options available.



**Course Fees\*** (NZD):

- Domestic students: \$780.61
- International students: \$7,785.71
- Student services fee: \$90.00  
*(Compulsory)*

### Programme Description

This programme will provide students with the ability to safely carry out a range of activities for the safe and efficient operation of a rural workplace, including the use and maintenance of workplace vehicles, machinery and infrastructure.

This programme is designed to complement other agricultural programmes that a graduate may wish to pathway onto.

### Entry Requirements

- Students must be aged 16 or over
- Students are selected on their expressed interest in farming, a willingness to meet the attendance and academic requirements of the programme, having literacy and numeracy skills sufficient to complete the programme, and commitment to the practical component
- International applicants who come from non-English speaking backgrounds require IELTS score of 5 with no band lower than 5 or an equivalent English proficiency outcome as outlined in the NZQF related Rule 18.

### Pathways

Graduates may wish to progress onto further training at Level 3 such as such as Farming Systems and/ or Pasture for Farming before moving before moving onto higher level study or into employment.

### Job Opportunities

**Could include:**

- General hand

### Programme Content

**Content includes:**

- Health and Safety
- Safe vehicle operation
- Chainsaws
- Agrichemicals
- Water supply
- Fencing

## Farming Systems

Level 3



**Qualification:** New Zealand Certificate in Agriculture (Farming Systems)



**Location:** Northland, Auckland, Waikato, Taranaki, Hawke's Bay, Wairarapa, Southland\*



**Intake:** January/February, March, April 2019\*



**Duration:** 28 weeks, full-time

*(Includes 26 teaching weeks and 2 week holiday)*



**Course Fees\*** (NZD):

- Domestic students: \$3,070.41
- International students: \$14,459.18
- Student services fee: \$169.92  
*(Compulsory)*

### Programme Description

Farming Systems Level 3 is designed for people wanting a career in farming. It will often be used by people wanting to pathway on into more agriculture learning after completing the New Zealand Certificate in Agriculture (Vehicles, Machinery and Infrastructure) (Level 3).

It will give students the knowledge and skills to work with and care for livestock; assist with livestock production tasks; assist with soil and pasture management including sustainable practices to protect soil and water quality; use technological tools; and adopt health and safety perspective when when working on farm.

### Entry Requirements

**Students must be:**

- Aged 16 or over
- Hold or working towards a learners', restricted or full driver's licence
- Students are selected on their expressed interest in farming, a willingness to meet the attendance and academic requirements of the programme, having literacy and numeracy skills sufficient to complete the programme, and commitment to complete the on-farm component
- International applicants who come from non-English speaking backgrounds require IELTS score of 5 with no band lower than 5 or an equivalent English proficiency outcome as outlined in NZQF related Rule 18.

### Pathways

Graduates may wish to progress onto higher level study such as Level 4 Drystock Breeding Farming, Level 4 Dairy Farming, Diploma in Agriculture Level 5 or gain entry level positions on farms.

### Job Opportunities

**Sheep and Beef Elective:**

- Junior shepherd
- General Farm hand
- Rural retail

**Dairy Elective:**

- Farm Assistant
- Rural retail

### Programme Content

**Content includes:**

- Health and Safety
- Soils
- Growing and Using Pasture
- Animal Health and Welfare
- Animal Breeding and Production (Dairy or Sheep and Beef elective)
- Technology on Farms
- Sustainable Practices

Note: Programme delivered at specific times of the year. Contact your region to confirm start dates.

\*Locations, start dates and fees are subject to approval and change. Visit [www.taratahi.ac.nz](http://www.taratahi.ac.nz) for up-to-date information.

\*Locations, start dates and fees are subject to approval and change. Visit [www.taratahi.ac.nz](http://www.taratahi.ac.nz) for up-to-date information.



## Farming Systems and Equipment

(Dairy or Sheep & Beef)

Level 3



**Qualification:** New Zealand Certificate in Agriculture (Farming Systems) and New Zealand Certificate in Agriculture (Vehicles, Machinery and Infrastructure)



**Location:** Northland, Auckland, Waikato, Taranaki, Wairarapa, Southland\*



**Intake:** January/February, May, July, September 2019\*



**Duration:** 44 weeks, full-time  
(Includes 38 teaching weeks and 6 weeks holiday)



**Course Fees\*** (NZD):

- Domestic students: \$3,851.02
- International students: \$20,020.40
- Student services fee: \$240.00  
(Compulsory)

### Programme Description

Farming Systems and Equipment Level 3 is developed for students wanting a career in farming.

This programme will give students the knowledge and skills to operate vehicles, machinery and equipment safely and effectively; move, handle, treat, feed, and perform routine husbandry practices on livestock; an understanding of pasture-based livestock feeding and how this is managed to meet animal needs; and an understanding of how sustainable practices and technology can be used on-farm.

### Entry Requirements

- Students must be aged 16 or over
- Students are selected on their expressed interest in farming, a willingness to meet the attendance and academic requirements of the programme, having literacy and numeracy skills sufficient to complete the programme, and commitment to complete the on-farm component
- International applicants who come from non-English speaking backgrounds require IELTS score of 5 with no band lower than 5 or an equivalent English proficiency outcome as outlined in the NZQF related Rule 18.

### Pathways

Graduates may wish to progress onto higher level study such as Level 4 Dairy Farming, Level 4 Drystock Breeding Farming, Diploma in Agriculture Level 5, or gain entry level positions on farms.

### Job Opportunities

#### Sheep and Beef Elective:

- Junior shepherd
- General Farm hand

#### Dairy Elective:

- Farm Assistant
- Rural retail

### Programme Content

#### Content includes:

- Health and Safety
- Safe vehicle operation
- Farm Machinery and Infrastructure
- Soils
- Growing and Using Pasture
- Animal Health and Welfare
- Animal Breeding and Production (Dairy or Sheep and Beef elective)
- Technology on farm
- Sustainable Practices

## Pasture for Farming

Level 3



**Qualification:** New Zealand Certificate in Agriculture (Pastoral Livestock Production)



**Location:** Northland, Taranaki, Wairarapa, Southland\*



**Intake:** April, May, August, September, October 2019\*



**Duration:** 13 weeks, full-time



**Course Fees\*** (NZD):

- Domestic students: \$780.60
- International students: \$7,229.59
- Student services fee: \$80.00  
(Compulsory)

### Programme Description

Pasture for Farming Level 3 will give students the knowledge to monitor pasture quantity, quality and grazing and to understand pasture management to support farm production. They will also gain the necessary skills to provide pasture-based feed to livestock at different times of the year. Students will assist with activities that improve pasture quality or stock utilisation of available feed.

This programme is targeted at people with some experience in the pastoral farming sector and want to further develop their skills and knowledge.

### Entry Requirements

- Students are selected based on their demonstrated aptitude for farming, being



physically able and capable to work safely around livestock and machinery

- Student must meet literacy and numeracy standards in place to manage the demands of the course
- Students must be aged 16 or over; and hold or are working towards a learners' licence, or restricted, or full drivers licence
- International applicants who come from non-English speaking backgrounds require IELTS score of 5 with no band lower than 5 or an equivalent English proficiency outcome as outlined in the NZQF related Rule 18.

### Pathways

Graduates may wish to progress onto higher level study at at Level 4 (such as Drystock Breeding Farming) or Level 5, or move into employment.

### Job Opportunities

#### Could include:

- Entry level farm worker

### Programme Content

#### Content includes:

- Establishing and Using Pasture
- Improving Pasture
- Meeting Production Targets

\*Locations, start dates and fees are subject to approval and change. Visit [www.taratahi.ac.nz](http://www.taratahi.ac.nz) for up-to-date information.

\*Locations, start dates and fees are subject to approval and change. Visit [www.taratahi.ac.nz](http://www.taratahi.ac.nz) for up-to-date information.



## Rural Fencing

Level 3



**Qualification:** New Zealand Certificate in Fencing (Rural)



**Location:** Waikato, Taranaki, Wairarapa, Southland\*



**Intake:** February, March, September, October 2019\*



**Duration:** 35 weeks, full-time  
(Includes 33 teaching weeks and 2 weeks holiday)



**Course Fees\*** (NZD):

- Domestic students: \$1,592.45
- International students: \$18,352.04
- Student services fee: \$200.00  
(Compulsory)

### Programme Description

This programme is for students wanting a career in rural fencing. It prepares them to construct, repair and maintain the range of fence types and stock yards they will work with on farms.

- complete the fencing placement component
- International applicants who come from non-English speaking backgrounds require an IELTS General or Academic score of 5 with no band lower than 5 or an equivalent English proficiency outcome as outlined in the NZQF related Rule 18.

### Entry Requirements

**Students must be:**

- Aged 16 or over
- Hold a learners', restricted or full driver's licence
- Students are selected on their expressed interest in fencing, a willingness to meet the attendance and academic requirements of the programme, having literacy and numeracy skills sufficient to complete the programme, and commitment to

### Pathways

Graduates of this programme may wish to study other Level 3 Agriculture programmes such as Farming Systems, then progress on to higher level study at Level 4 or 5. They can also move into Industry training (with the ITO) or into employment.

### Job Opportunities

**Could include:**

- Rural fencing contractor
- Fencer General

### Programme Content

**Content includes:**

- Fencing Health and Safety
- Fencing Machinery, Equipment and Vehicles
- Fencing Planning
- Basic Fencing
- Electric Fences
- Conventional Fences
- Post and Rail Fences



\*Locations, start dates and fees are subject to approval and change. Visit [www.taratahi.ac.nz](http://www.taratahi.ac.nz) for up-to-date information.

## Apiculture

Level 3



**Qualification:** New Zealand Certificate in Apiculture Level 3



**Location:** Northland, Auckland, Waikato, Bay of Plenty, Hawke's Bay, Taranaki, Manawatu, Wairarapa, Wellington, Nelson/Marlborough, Canterbury Central Otago, Dunedin, Invercargill\*



**Intake:** July, August, September 2019\*



**Duration:** 36 weeks, part-time



**Course Fees\*** (NZD):

- Domestic students: \$1,273.96  
(Fees include: DECA exam fee, cost of one hive, course materials and textbooks.)
- Student services fee: \$130.00  
(Compulsory)

### Programme Description

This programme is an entry level qualification designed for people considering working in the beekeeping industry, those already in the industry who need formal qualifications to progress in their career, or to provide the skills and knowledge to operate your own beehive.

From the pollination of horticulture crops and pasture to the production of honey, the beekeeping industry is vital to New Zealand's primary sector success.

This programme will give students the necessary skills to maintain healthy, productive beehives and extract honey from them.

The programme offers small classes with lots of one to one tuition throughout the beekeeping season.

### Entry Requirements

- Applicant must be 16 years or over
- Applicant must be a New Zealand citizen or permanent resident
- Applicant must have a reasonable level of fitness required to carry out the activities of a beekeeper and to meet the physical demands of beekeeping
- Any allergy medication must be on the person at all times.

### Workshops

15 seasonally-based fortnightly workshops, covering the entire beekeeping season plus an external American Foulbrood Recognition (AFB) workshop.

### Pathways

Graduates may wish to progress onto further training (at Level 4) before moving into employment.

### Job Opportunities

**Could include:**

- Commercial apicultural worker
- Beekeeper's assistant
- Junior beekeeping position
- Starting up a small apicultural business

### Programme Content

**Content includes:**

- How to construct and repair beehives
- Seasonal management of bees and hives
- Requeening the hives
- Identification and treatment of diseases
- Shifting beehives and honey extraction

\*Locations, start dates and fees are subject to approval and change. Visit [www.taratahi.ac.nz](http://www.taratahi.ac.nz) for up-to-date information.



## Equine Skills

Level 3



**Qualification:** New Zealand Certificate in Equine Skills (Sporthorse Stable Assistant) Level 3



**Location:** Wellington\*



**Intake:** January 2019\*



**Duration:** 14 weeks, full-time  
(Excludes holiday weeks)



**Course Fees\*** (NZD):

- Domestic students: \$2,485.71
- International students: \$7,785.71
- Student services fee: \$130.00  
(Compulsory)

### Programme Description

This qualification provides learners with the skills and knowledge to assist in the stabling, care and exercise of horse in the Sporthorse industry.

The programme focuses on Sport horses and learners will be able to apply routine procedures when exercising and training horses, conduct the routine preparation of a horse for an event and attend to horses and riders' requirement at the event.

Students complete theory and practical training most days in addition to handling and riding a range of horses and will allow students to work more effectively in an equine workplace.

### Entry Requirements

- Applicant must be 16 years or over
- Applicant must have a reasonable level of fitness required to carry out duties involving horses and can meet the physical demands of stable work
- Applicants need to have handled horses and be able to rise to the trot
- International applicants who come from non-English speaking backgrounds require IELTS score of 5 with no band lower than 5 or an equivalent English proficiency outcome as outlined in the NZQF related Rule 18.

### Pathways

Graduates may wish to progress onto higher level study at Level 4, or move into employment.

### Job Opportunities

Working under supervision in a team as a groom, stable hand or trekking guide.

### Programme Content

**Content includes:**

- The horse anatomy, health, breeds and behaviour
- Care for the horse (turnout, receiving and dispatch, horse care and rehab, feeding and grooming)
- The horse environment including stabling, pasture and paddock maintenance
- Working a horse – train and ride for exercise and event preparation
- Equine careers and expectations of working in the equine industry
- Students will be expected to attend at least one sporting event, either locally or within the region. This may be scheduled over a weekend.

## Sporthouse Care & Equipment

Level 3



**Qualification:** New Zealand Certificate in Equine Skills (Sporthorse Stable Assistant) Level 3 and New Zealand Certificate in Agriculture (Vehicles, Machinery and Infrastructure) Level 3



**Location:** Northland, Wellington\*



**Intake:** February, March, September 2019\*



**Duration:** 31 weeks, full-time  
(Includes 27 teaching weeks and 4 weeks holiday)



**Course Fees\*** (NZD):

- Domestic students: \$3,266.32
- International students: \$15,571.42
- Student services fee: \$190.00  
(Compulsory)

### Programme Description

This qualification provides learners with the skills and knowledge to assist in the stabling, care and exercise of horse in the Sporthorse industry.

The programme focuses on Sport horses and learners will be able to apply routine procedures when exercising and training horses for sport horse discipline, conduct the routine preparation of a horse for an event and attend to horses and riders' requirement at the event.

Students complete theory and practical training most days in addition to handling and riding a range of horses and will allow students to work more effectively in an equine workplace.

This programme will provide students with the ability to safely carry out a range of activities for the safe and efficient operation of a rural workplace, including the use and maintenance of workplace vehicles, machinery and infrastructure.

### Entry Requirements

- Applicant must be 16 years or over
- Applicant must have a reasonable level of fitness required to carry out duties involving horses and can meet the physical demands of stable work
- Applicants need to have handled horses and be able to rise to the trot
- International applicants who come from non-English speaking backgrounds require IELTS score of 5 with no band lower than 5 or an

equivalent English proficiency outcome as outlined in the NZQF related Rule 18.

### Pathways

Graduates may wish to progress onto higher level study at Level 4, or move into employment.

### Job Opportunities

Working under supervision in a team as a groom, stable hand or trekking guide

### Programme Content

**Content includes:**

- Health and safety
- Equine machinery
- Water supply
- Fencing
- Equine infrastructure
- Light Utility Vehicles (LUV) or Quad bikes
- Horse care
- Horse health
- Horse exercise and training
- Horse events
- Students will be expected to attend at least one sporting event, either locally or within the region. This may be scheduled over a weekend.

\*Locations, start dates and fees are subject to approval and change. Visit [www.taratahi.ac.nz](http://www.taratahi.ac.nz) for up-to-date information.

\*Locations, start dates and fees are subject to approval and change. Visit [www.taratahi.ac.nz](http://www.taratahi.ac.nz) for up-to-date information.



## Certificate in Agriculture

Level 3



**Qualification:** Certificate in Agriculture (Level 3)



**Location:** Telford (Balclutha)



**Intake:** February 2019\*



**Duration:** 37 weeks, full-time



**Course Fees\*** (NZD):

- Domestic students: \$4,132.04
- International Students: \$20,020.40
- Student services fee: \$240.00  
(Compulsory)

### Programme Description

Studying agriculture at Telford gives you the opportunity to learn a variety of farming skills that will serve you well in your career. One third of the programme is on-farm work experience, one third is workshop and practical sessions to develop skill sets and one third is theory based/academic. Field trips are always an enjoyable part of the year and add another dimension to the course.

Throughout the year you'll also study sheep, beef, dairy and deer farming systems.

Work experience on a variety of different farms is arranged by Telford. You'll either work on one of our farm units or on other farms in the Otago/Southland regions. Many students are offered employment as a result of their work experience.

Telford has 30 dog kennels, so you may have an opportunity to bring a heading dog in the second semester.

### Entry Requirements

**Students must be:**

- Be aged 16 years or over. International students must be 18 years or over
- Have completed at least three years of secondary education, and achieved NCEA Level 1, or equivalent
- Be confident they can succeed at Level 3 and have the physical ability to manage the work without putting themselves or others at risk
- Have adequate literacy and numeracy skills
- Drivers License is recommended
- International applicants who come from non-

English speaking backgrounds require IELTS score of 5 with no band lower than 5 or an equivalent English proficiency outcome as outlined in the NZQF related Rule 18.

### Other

Opportunities to gain your First Aid Certificate, as well as your Heavy Traffic and Firearms licences, are available through third party providers.

### Job Opportunities

**Could include:**

Shepherds, contractors, farm assistants, shearers, wool handlers, sharemilkers, and relief milkers.

### Programme Content

**Content includes:**

- Agronomy - pastures, crops, soils, fertilisers and agrichemicals
- Land skills - hazard management, quad bikes, tractors, water supplies, chainsaws and environmental sustainability
- Livestock- shearing, milking, livestock handling, behaviour and welfare, production, feeding and nutrition, breeding and reproduction
- Workshop skills - fencing, mechanics, welding, farm forestry, workshop project and calculations.

\*Start dates and fees are subject to approval and change. Visit [www.telford.ac.nz](http://www.telford.ac.nz) for up-to-date information.

## Certificate in Apiculture

Level 3



**Qualification:** Certificate in Apiculture (Level 3)



**Location:** Telford (Balclutha), Kaitaia, Northland, in partnership with Te Runanga o Te Rarawa School of Honey Gatherers\*



**Intake:** May 2019\*



**Duration:** 37 weeks, full-time



**Course Fees\*** (NZD):

- Domestic students: \$4,132.04
- International students: \$20,202.40
- Student services fee: \$240.00  
(Compulsory)

### Programme Description

During the course students will about hive management and manipulation, disease identification, introduction to queen bee rearing, bee behaviour, pollination, colony behaviour and extracting honey as well as the commercial aspects of the industry such as marketing and administration.

### Entry Requirements

**Students must be:**

- Be aged 16 years or over. International students must be 18 years or over
- Have the academic and physical capability to successfully complete the course
- International students must have sufficient language skills. Please note International students require: TOEFL 61 ibt, Essay rating (TWE) 4, IELTS of 5.5.

### Job Opportunities

**Could include:**

Small to large scale apiculture operator, owner or manager in New Zealand and overseas.

### Programme Content

**Content includes:**

- Agricultural chemicals
- Agrimaintenance
- Alternative hive products
- Bee behaviour
- Beekeeping equipment
- Botany
- Business administration
- Entomology
- Health and safety
- Hive manipulations
- Honey processing
- Marketing in the apiculture industry
- New Zealand beekeeping
- Pests and diseases
- Pollination and hive management
- Queen bee rearing.



\*Locations, start dates and fees are subject to approval and change. Visit [www.taratahi.ac.nz](http://www.taratahi.ac.nz) for up-to-date information.



## Certificate in Equine

Level 3



**Qualification:** Certificate in Equine (Level 3)



**Location:** Telford (Balclutha)\*



**Intake:** February 2019\*



**Duration:** 17 weeks, full-time



**Course Fees\*** (NZD):

- Domestic students: \$2,435.51
- International Students: \$9,000.00
- Student services fee: \$120.00  
(Compulsory)

### Programme Description

The qualification is designed for students who wish to gain employment in the equine industry. On completion of this programme, graduates enter the equine industry in a number of different areas such as racing stables, sport horse stables, and horse breeding farms.

### Entry Requirements

#### Students must be:

- Be aged 16 years or over on the date the programme of study commences - unless an exemption from school has been given. International students must be 18 years or over
- Have reasonable likelihood of success at Level 3, including the physical ability to manage the work without putting self and/or others at risk
- Have achieved NCEA Level 1 or equivalent
- Students must be able to walk, trot and canter in a balanced position and be able to jump 60cm in a balanced position
- International students must have sufficient language skills. Please note International students require: TOEFL 61 ibt, Essay rating (TWE) 4, IELTS of 5.5.

### Pathways

On completion of Level 3, students can progress to Level 4 and select a specific area of study.

Please note: Those students who enter the Certificate in Equine (Level 3) in the non-riding option can exit the programme having gained the required skills for entry into stable practice employment.

Those students wishing to continue with non-riding options may enter the Certificate in Equine (Level 4) and elect either the breeding or harness racing strands only.

### Job Opportunities

#### Could include:

- Racing stables, sporthorse stables and horse breeding farms.

### Programme Content

#### Content includes:

- Equine health 2
- Equine industries - introduction to sporthorse, harness racing, track riding, breeding and trekking
- Equine land skills 1
- Stable practices





# PUSH ON INTERMEDIATE PROGRAMMES

4 What can I Study?

LEVEL





## Dairy Farming

Level 4



**Qualification:** New Zealand Certificate in Agriculture (Dairy Farming)



**Location:** Northland, Auckland, Taranaki, Wairarapa, Telford (Balclutha)\*



**Intake:** January/February, July 2019\*



**Duration:** 50 weeks, full-time  
(Includes 41 teaching weeks and 9 weeks holiday)



**Course Fees\*** (NZD):

- Domestic students: \$3,537.73
- International students: \$22,244.90
- Student services fee: \$240.00  
(Compulsory)

### Programme Description

Level 4 Dairy Farming programme will give students the knowledge and skills to implement Dairy Health, Breeding and Feeding Plans; monitor, analyse and report on farm performance, maintain vehicles and equipment, use farming practices that minimize environmental impact, and manage the milking process to optimize milk quality.

This programme is designed for level 3 graduates or equivalent wanting to move into a more responsible role on a dairy farm.

### Entry Requirements

**Students must be:**

- Aged 16 or over
- Hold or working towards a learners', restricted or full driver's licence
- Students are selected on their demonstrated aptitude for Dairy farming, willingness to meet the attendance requirements of the programme, having literacy and numeracy skills and academic focus sufficient to complete the programme, and commitment to undertake the work experience and self-directed components
- Students who are not recent level 3 Taratahi graduates must have 2 years industry experience (or equivalent)
- International applicants who come from non-English speaking backgrounds require IELTS score of 5.5 with no band lower than 5 or an

equivalent English proficiency outcome as outlined in the NZQF related Rule 18.

### Pathways

Graduates may wish to progress onto higher level study such as the Diploma in Agriculture Level 5, or gain employment on dairy farms.

### Job Opportunities

**Could include:**

- Farm assistant
- 2IC
- Rural retail
- Rural service industry

### Programme Content

**Content includes:**

- Understanding Performance
- Farm Reports
- Maintaining Vehicles and Equipment
- Managing Environmental Impacts
- Dairy Health Plans
- Dairy Feeding Plans
- Managing Milk Production

\*Locations, start dates and fees are subject to approval and change. Visit [www.taratahi.ac.nz](http://www.taratahi.ac.nz) for up-to-date information.

## Drystock Breeding Farming

Level 4



**Qualification:** New Zealand Certificate in Agriculture (Drystock Breeding Farming)



**Location:** Northland, Taranaki, Wairarapa, Telford (Balclutha)\*



**Intake:** January/February, July 2019\*



**Duration:** 50 weeks, full-time  
(Includes 41 teaching weeks and 9 weeks holiday)



**Course Fees\*** (NZD):

- Domestic students: \$3,537.73
- International students: \$22,244.90
- Student services fee: \$240.00  
(Compulsory)

### Programme Description

Level 4 Drystock Breeding Farming programme will give students the knowledge and skills to implement Health, Breeding, Feeding and Production Plans; monitor, analyse and report on farm performance, maintain vehicles and equipment, and use farming practices that minimize environmental impact.

This programme is designed for level 3 graduates or equivalent wanting to move into a more responsible role on a Drystock farm.

### Entry Requirements

**Students must be:**

- Aged 16 or over
- Hold or working towards a learners', restricted or full driver's licence
- Students are selected on their demonstrated aptitude for Drystock farming, willingness to meet the attendance requirements of the programme, having literacy and numeracy skills and academic focus sufficient to complete the programme, and commitment to undertake the work experience and self-directed components
- Students who are not recent level 3 Taratahi graduates must have 2 years industry experience (or equivalent)
- International applicants who come from non-English speaking backgrounds require IELTS score of 5.5 with no band lower than 5 or an equivalent English proficiency outcome as

outlined in the NZQF related Rule 18.

### Pathways

Graduates may wish to progress onto higher level study such as the Diploma in Agriculture Level 5, or gain employment on drystock farms.

### Job Opportunities

**Could include:**

- Junior Shepherd
- Shepherd
- General farm hand
- Rural retail
- Rural service industry

### Programme Content

**Content includes:**

- Understanding Performance
- Farm Reports
- Maintaining Vehicles and Equipment
- Managing Environmental Impacts
- Drystock Health Plans
- Drystock Breeding Plans
- Drystock Feeding Plans
- Drystock Production Plans

\*Locations, start dates and fees are subject to approval and change. Visit [www.taratahi.ac.nz](http://www.taratahi.ac.nz) for up-to-date information.



## Foundation Certificate in Agriculture

Level 4



**Qualification:** Foundation Certificate in Agriculture



**Location:** Wairarapa, Central North Island Dairy Academy, Telford (Balclutha)\*



**Intake:** February 2019\*



**Duration:** 17 weeks, part-time  
(Includes 16 teaching weeks and 1 week holiday)



**Course Fees\*** (NZD):

- Domestic students: \$3,466.98
- International students: \$19,620.00
- Student services fee: \$120.00  
(Compulsory)

### Programme Description

The aim of the Foundation Certificate in Agriculture is to provide an **alternate pathway for entry into the Diploma in Agriculture (Level 5)** by providing an introduction to the disciplines that underpin agriculture.

The Foundation Certificate in Agriculture comprises of four 15 credit courses that introduce learners to the principles underpinning various aspects of agriculture. Courses include Soils, Pasture and Crops, Animal Production and Health, and Foundation Farm and Industry Study.

Successful graduates of the Foundation Certificate in Agriculture can fast track their study in the Massey University Diploma in Agriculture by cross crediting three courses over.

### Entry Requirements

- Admission to the Foundation Certificate in Agriculture requires that the candidate will have completed, 12 months farm employment or equivalent; and,
- Have successfully completed NCEA Level Two and achieved the literacy and numeracy requirements for University Entrance, or have achieved an equivalent post-secondary school qualification
- International applicants who come from non-

English speaking backgrounds require IELTS score of 5.5 with no band lower than 5 or an equivalent English proficiency outcome as outlined in NZQF related Rule 18

- Note: Central North Island Dairy Academy is open to Domestic Students only.

### Pathways

Graduates of this programme may chose to continue their study and complete the Massey University Diploma in Agriculture (Level 5) or gain employment.

May wish to progress onto higher level study such as the Diploma in Agriculture Level 5, or gain employment on drystock farms.

### Job Opportunities

**Could include:**

- Shepherd
- Farm Assistant
- Rural service industry role

### Programme Content

**Content includes:**

- Animal Production and Health
- Soil Productivity
- Pasture and Crop Production
- Foundation Farm and Industry Studies

## Certificate in Equine

Level 4



**Qualification:** Certificate in Equine (Level 4)



**Location:** Telford (Balclutha)\*



**Intake:** July 2019\*



**Duration:** 17 weeks, full-time



**Course Fees** (NZD):

- Domestic students: \$2,435.51
- International Students: \$9,000.00
- Student services fee: \$120.00  
(Compulsory)

### Programme Description

The qualification is designed for students who wish to gain employment in the equine industry. On completion of this programme, graduates enter the equine industry in a number of different areas such as racing stables, sporthorse stables, track riding, harness racing, and horse breeding farms. Students will be able to work with minimum supervision through a range of activities.

### Entry Requirements

**Students must:**

- Have completed Certificate in Equine (Level 3) or equivalent, and

**Those choosing the Sporthorse Industry Strand must:**

- Have the ability to jump 70cm (both show jumps and cross country fences) upon course entry

**Those choosing the track riding industry strand must:**

- Have the ability to jump 50-60cm (cross country fences) upon course exit
- International students must have sufficient language skills. Please note International students require: TOEFL 61 ibt, Essay rating (TWE) 4, IELTS of 5.5.

### Pathways

Graduates of this programme may wish to move into employment in the equine industry or study further Equine-specific subjects available via our Distance Learning programmes.

### Job Opportunities

**Could include:**

- Working in racing stables or sporthorse stables
- Track riding
- Harness racing
- Horse breeding farms
- Riding schools
- Running their own equine business or working towards stable management

### Programme Content

**Content includes:**

- Equine health 3
- Equine nutrition
- Industry strand -students choose one strand from:
  - Sporthorse (either riders or coaches)
  - Track riding
  - Track racing or harness racing
  - Breeding
  - Land skills 2.

Our equine programme provides a solid grounding in all aspects of horsemanship.

\*Locations, start dates and fees are subject to approval and change. Visit [www.taratahi.ac.nz](http://www.taratahi.ac.nz) for up-to-date information.

\*Locations, start dates and fees are subject to approval and change. Visit [www.telford.ac.nz](http://www.telford.ac.nz) for up-to-date information.



# GO BEYOND ADVANCED PROGRAMMES

LEVEL

5



## Diploma in Agriculture

Level 5



**Qualification:** Diploma in Agriculture  
(Massey University)



**Location:** Wairarapa, Telford (Balclutha)\*



**Intake:** February 2019\*



**Duration:** 37 weeks  
(Includes 32 teaching weeks & 5 weeks holiday)



**Course Fees\*** (NZD):

- Domestic students: \$5,799.43
- International students: \$20,020.40
- Student services fee: \$240.00  
(Compulsory)

### Programme Description

The diploma in agriculture has eight courses that are designed to provide students with the knowledge and appreciation of pasture and crop production and management, animal production, health and management, soil productivity, farm engineering, and financial and business management.

This programme is designed for Level 3 or 4 agriculture graduates, or people who have previous farm experience and are looking to upskill.

### Entry Requirements

**Students must have either:**

- Gained University Entrance, or
- Completed a Level 4 Certificate in Agriculture, or
- Be 20 years or age or over, or
- Successfully completed a Foundation Certificate in Agriculture (Level 4) at Taratahi\*\*
- International applicants who come from non-English speaking backgrounds require an IELTS Academic score of 5.5 with no band lower than 5 or an equivalent English proficiency outcome as outlined in the NZQF related Rule 18.

Students must have completed a minimum of 12 months farm practical work experience, employment on a commercial farm or equivalent.

\*\*Enquire with us about the Foundation Certificate in Agriculture.

### Pathways

Graduates are well placed to contribute positivity to employment in the primary industry sector or proceed to higher level study such as a Bachelor's degree in Agricommerce or Agriscience.

### Job Opportunities

**Depending on the amount of prior work experience, job opportunities could include:**

- Shepherd
- Farm Assistant
- Head Shepard
- 2IC
- Farm Manager
- Rural retail
- Rural service industry

### Programme Content

**Content includes:**

- Farm and Industry Study
- Soil Productivity
- Animal Production and Health
- Pasture and Crop Production
- Animal Production
- Farm Production Systems
- Farm Management
- Agricultural Engineering

## New Zealand Diploma in Agribusiness Management

Level 5



**Qualification:** New Zealand Diploma in Agribusiness Management



**Location:** Wairarapa, Southland\*



**Intake:** February, July 2019\*



**Duration:** 2.5 years, part-time



**Course Fees\*** (NZD):

- Domestic students: \$3,806.27 or \$23.00 per credit
- Student services fee: \$240.00  
(Compulsory)

### Programme Description

This programme is targeted at people who are in a management capacity in an agribusiness, or who have some industry or other relevant experience and are ready to advance into a management position within an agribusiness.

The purpose of this programme is to increase the skill level of individuals within the agribusiness sector who have the knowledge and skills to manage a wide range of agribusiness operations.

Students who complete this programme will come out with recognised agribusiness management skills and knowledge to enable improved job performance and enhance employment opportunities.

### Entry Requirements

Applicants need 2-3 years' industry experience and have a passion and motivation to work in the agribusiness sector. Applicants entering into this programme should be in a position to access financial and production performance information about a specific agribusiness.

### Pathways

Graduates are well placed to contribute positivity to employment in the primary industry Sector or proceed to higher level study.

### Job Opportunities

**Depending on the amount of prior work experience, job opportunities could include:**

- Farm Manager
- Business Manager
- Operations Manager

### Programme Content

**Content includes:**

- Business Management and Planning
- Financial Management
- Human Resource Management
- Resource Management
- Business Management

\*Locations, start dates and fees are subject to approval and change. Visit [www.taratahi.ac.nz](http://www.taratahi.ac.nz) for up-to-date information.

\*Locations, start dates and fees are subject to approval and change. Visit [www.taratahi.ac.nz](http://www.taratahi.ac.nz) for up-to-date information.



## Lincoln University Diploma in Agriculture

Level 5



**Qualification:** Lincoln University Diploma in Agriculture



**Location:** Wairarapa\*



**Intake:** February 2019\*



**Duration:** 2 years, part-time



**Course Fees\*** (NZD):

- Domestic students: \$6,990.00
- International students: \$20,800.00
- Student services fee: \$240.00  
(Compulsory)

### Programme Description

This diploma is available on a part-time basis and is ideal for students wanting to obtain more advanced qualifications while working. The diploma in agriculture covers eight papers in: soil management, plant husbandry, plant and animal health, livestock production systems, farm management, engineering, computing and communication.

The diploma is offered over two 12-week semesters each year. Students take two papers each semester, taking two years to complete the qualification. Students are required to attend class one afternoon a week. See [www.lincoln.ac.nz/regionaldiploma](http://www.lincoln.ac.nz/regionaldiploma) for further details.

### Entry Requirements

You are qualified for the admission to the Lincoln University Regional Diploma in Agriculture programme if you:

- have a New Zealand University Entrance Qualification; or
- have achieved 40 credits at NCEA Level 2 across four of the subjects recognised by Lincoln University for entry into these diplomas. You must also meet the literacy and numeracy requirements for University Entrance; or
- are over 20 years old and a New Zealand citizen or permanent resident, applying through Special Admission provisions; or
- have successfully completed an approved qualification at NZQA Level 4 or above,

e.g. the National Certificate in Agriculture (Level 4)

- IELTS for international students - 5.5 overall with at least 5.5 for Reading and Writing, and no other component less than 5.0.

### Pathways

At the conclusion of the Diploma, students are well placed to contribute positively to land-based employment or to proceed to study at Bachelor's level.

### Job Opportunities

Depending on the amount of prior work experience typical job opportunities after graduation could include assistant manager, stock manager, farm manager, head shepherd, sharemilker, fertiliser rep or sales rep.

### Programme Content

**Content includes:**

- Farm Management A
- Computing and Communication
- Plant Husbandry
- Soils and Soil Management
- Farm Management B
- Livestock Production
- Plant and Animal Health
- Engineering

\*Locations, start dates and fees are subject to approval and change. Visit [www.taratahi.ac.nz](http://www.taratahi.ac.nz) for up-to-date information.

## Central North Island Dairy Academy

Level 5



### Programme Description

The Central North Island Dairy Academy will offer an intensive 37 week residential programme combining theory, practical training and on-farm experience based around the Diploma in Agriculture Level 5. The aim of this programme is to develop graduates who possess technical, managerial and leadership skills.

The diploma in agriculture has eight courses that are designed to provide learners with knowledge and appreciation of pasture and crop production and management; animal production, health and management; soil management; farm engineering and mechanisation; financial; business and marketing management; communication skills and personnel management. This is done through an integration of practical training with theoretical knowledge and presentation of reports based on farm operations.

Intakes are limited to fifteen students per year. Students are selected through an application process. The Dairy Academy will operate on the Ariki Dairy Unit, owned by Theland in the Wairakei District near Taupo. Students will live in housing on nearby Theland farms and combine classroom study with practical application of learning on the Ariki dairy farm. Students will be encouraged to gain casual employment on nearby dairy farms, primarily in study breaks.

### Programme Benefits

- Free food and accommodation
- Free transport and travel
- Free extra professional development, text books and learning materials
- \$10,000 worth of scholarships are available to those students who excel
- Weekend work available
- Free field trips provided
- 100% employment rate for 2016 and 2017 graduates.

\*Start dates and fees are subject to approval and change. Visit [www.taratahi.ac.nz](http://www.taratahi.ac.nz) for up-to-date information.



**Qualification:** Diploma in Agriculture (Massey University)



**Location:** Taupo



**Intake:** February 2019\*



**Duration:** 37 weeks, full-time  
(Includes 32 teaching weeks and 5 weeks holiday)



**Course Fees\*** (NZD):

- Domestic students: \$5,901.47
- Student services fee: \$240.00  
(Compulsory)

### Entry Requirements

**Students must have either:**

- Gained University Entrance, or
- Completed a Level 4 Certificate in Agriculture, or
- Be 20 years or age or over, or
- Successfully completed a Foundation Certificate in Agriculture (Level 4) at Taratahi\*\*

Students must have completed a minimum of 12 months farm practical work experience, employment on a commercial farm or equivalent.

\*\*Enquire with us about the Foundation Certificate in Agriculture.

### Pathways

Graduates are well placed to contribute positivity to employment in the primary industry sector or proceed to higher level study such as a Bachelor's degree in Agricommerce or Agriscience.

### Job Opportunities

Depending on the amount of prior work experience, job opportunities could include: Herd Manager, Assistant Manager, 2IC.

### Programme Content

**Content includes:**

- Farm and Industry Study
- Milk quality
- Animal Production and Health
- Pasture and Crop Production
- Animal Production
- Farm Production Systems
- Farm Management
- Agricultural Engineering



## Diploma for Rural Veterinary Technician

Level 5



**Qualification:** Diploma for Rural Veterinary Technicians (Level 5)



**Location:** Telford (Balclutha)\*



**Dates:** February 2019\*



**Duration:** 37 weeks, full-time



**Course Fees\*** (NZD):

- Domestic students: \$4,777.35
- International Students: \$20,020.40
- Student services fee: \$240.00 (Compulsory)

### Programme Description

Students with an interest in the health and handling of large animals from a veterinary perspective will enrol in this interesting and challenging programme. Rural Veterinary Technicians (RVT) students may become for example, farmers, scientists and rural veterinary technicians, with an interest in large animals such as horses, cattle, deer, goats, alpaca etc.

Telford offers small classes with a hands on training emphasis. Students develop their skills on the Telford farm and vets in the surrounding areas. This equips graduates with industry best practice knowledge and skills.

During the year you'll develop a range of competencies relating to rural animals, work ethics and professional behaviour.

### Entry Requirements

#### Applicants must:

- Have completed four years of secondary education and achieved NCEA Level 2 with NCEA Science Level 1 and at least 12 credits in Chemistry and/or Biology at NCEA Level 2 or equivalent
- Be aged 18 years or over be physical and medically fit to manage the work without putting self and/or others at risk, and have adequate literacy and numeracy skills
- Places are limited, so there may be an interview as part of the selection process
- International students must have sufficient language skills. Please note International students require: TOEFL 61 ibt, 500 paper, Essay rating (TWE) 4, IELTS of 5.5.

### Job Opportunities

On successful completion of this programme, graduates will be able to work competently as Rural Veterinary Technicians in a veterinary practice. They could also gain entry-level employment as a rural veterinary technician in allied sectors such as dairy farming and manufacturing, retail outlets, animal research, artificial breeding services and TB testing.

High performing graduates may also choose to pursue higher education and become technologists or professionals in the animal science field.

### Programme Content

#### Content includes:

- Anatomy and physiology
- Diseases
- General business practices
- Rural animal reproduction
- Rural animal handling and production
- Surgery



\*Locations, start dates and fees are subject to approval and change. Visit [www.telford.ac.nz](http://www.telford.ac.nz) for up-to-date information.



# WHERE WE FARM AND TEACH

6,200HA  
Effective\*

1.4M KG  
Products sold\*

8 FARMS  
Managed\*

- 01 Northland  
Non-residential
  - 02 Auckland  
Non-residential with MIT
  - 03 Waikato / Bay of Plenty  
Non-residential with Wintec
  - 04 Central North Island  
Dairy Academy
  - 05 Taranaki  
Non-residential
  - 06 Hawke's Bay  
Non-residential with EIT
  - 07 Wairarapa  
Residential Campus  
/ National Office
  - 08 Telford  
Residential Campus
  - 09 Southland  
Non-residential with SIT
- Apiculture only



## OUR CAMPUSES

Wherever you are in New Zealand, find your place amongst Taratahi's family of like-minded, fun and friendly staff and students.

\*Totals across the various places we farm and teach.



## Wairarapa

Our Wairarapa campus is located in Masterton on Taratahi's first farm and is where we began. Sir William Perry gifted this farm to the Crown in 1919. The main administration building (National Office) is also located here and complements modern teaching facilities and the residential campus.

Programmes in Wairarapa range from Levels 2 - 5. There are a range of programmes including equine, apiculture and agriculture. Our equine programme is offered through our partner Wellington Indoor Riding School.

A range of accommodation options are provided for up to 105 students. Masterton also accepts non-residential students. The campus is based on a 300-hectare commercial dairy farm.

## Northland

Taratahi's Northland office and main campus is in Whangarei. There are training programmes from Levels 2 – 4 running from the far north right down to the northern Auckland suburbs. Taratahi has a range of farm access agreements in place to allow students to train on commercial farms.

## Auckland

Taratahi delivers agricultural programmes at Levels 2 - 4, based at the Manukau Institute of Technology (MIT), Otara campus. There are a range of agreements in place with local farmers that allow Taratahi tutors and students access for training on real commercial properties.

## Waikato / Bay of Plenty

The main office and campus in Waikato is located in Putaruru, with classes taking place throughout the Waikato and Bay of Plenty regions.

Agricultural programmes at Levels 2 - 3 are delivered in this region. Taratahi has a range of agreements in place to allow students access and training on commercial farms.

## Taupo

Taratahi, in partnership with Theland has established the Central North Island Dairy Academy on a commercial dairy farm. This programme offers the Massey Diploma Level 5 and is designed to develop a pipeline of competent and well-rounded future dairy farm leaders.

## Hawke's Bay

The Hawke's Bay campus is located at the Eastern Institute of Technology (EIT) campus. In the Hawke's Bay Taratahi offers agricultural programmes from Levels 2 to 3. Taratahi has access to and manages a range of farms for training purposes. Programmes are offered all over the Hawke's Bay.

## Manawatu

In Manawatu, Taratahi offers training and programmes at Level 2. Taratahi has a range of agreements in place with local farmers that allows Taratahi tutors and students access for training on real commercial farms, along with a leased farm called Ballantrae that is just outside of Woodville.

## Taranaki

The main Taranaki office is located in Stratford, with farms and classrooms located all around the Taranaki region. Taranaki offers agricultural programmes from Levels 2 - 4.

## Telford

In Balclutha, South Otago, Telford offers agricultural programmes from levels 2-5 and is home for up to 120 residential students. There is a range of programmes including equine, apiculture, agriculture and Rural Veterinary Technician skills. The campus is based on a 670-hectare commercial farm. Telford also accepts non-residential students.

## Southland

Taratahi run agricultural programmes at Levels 2-3 in Southland, and work in partnership with the Southern Institute of Technology (SIT), to support delivery that allow Taratahi tutors and students access for training on real commercial farms.

## Nationwide

Also offered nationally through our Primary Industries in Schools Trades Academy portfolio is GFP; Grow-Feed-Protect, our Secondary-Tertiary programme that supports the achievement of NCEA Levels 1-3. The programme is run with participating schools throughout New Zealand.







The following farms are owned, leased or managed by Taratahi. In addition to these farms, we also have access arrangements with many other commercial farms around the country to provide students with learning opportunities.



# DAIRY

## Wairarapa Dairy Unit

Masterton

- **225HA** Land
- **500** Stock

Taratahi's 225ha dairy unit is situated on our main Wairarapa Campus.

The dairy unit milks around 560 cows through a 46 aside herringbone shed and also rears replacement heifers through to weaning in a modern calf rearing operation.

## Telford

Balclutha

Telford farm is situated on our Telford campus, and is located in South Otago, 6km from Balclutha.

- **219HA** Land
- **620** Stock

**Telford Dairy** – The 219ha (effective) dairy unit peak milk 620 cows. The land is predominately flat and surrounds the Otanomomo Reserve.

The units are integrated in that the Sheep Unit provides winter grazing for the Dairy Unit.

Learn on real farms  
 and follow a clear  
 pathway to your future  
 in dairy.



# SHEEP & BEEF

## Tautane Station

Hawke's Bay

- **12KM** Coastline
- **3,375HA** Land
- **30,000** Stock Units

Tautane Station is owned by Ngāti Kahungunu Iwi Incorporated and isolated on the East Coast in Hawke's Bay, close to Herbertville and approximately 50 minutes from Dannevirke. The farm stretches across a picturesque 12km of coastline which includes the well-known Cape Turnagain.

Tautane is leased by Taratahi, totals 3,375ha and carries 30,000 sheep and beef stock units. Its primary focus is breeding. Tautane featured on Country Calender in August 2016, highlighting learning on the land for our Taratahi sheep and beef students. Tautane hosts Taratahi students for on farm experience which sees the students staying on farm for up to two weeks at a time.

## Mangarata

Wairarapa

- **518HA** Land
- **4,500** Stock Units

Mangarata is a 518ha breeding and semi finishing farm situated five minutes northeast of Masterton. Comprising of a mix of flat, rolling and medium hill country, the range of topography allows for a broad range of learner experiences. Mangarata runs 4,500 stock units and has a maternal breeding system in place focusing on fecundity and weaning weights. In combination with the sheep flock, Mangarata runs a beef cow operation, where all yearling heifers are mated.

## Glenside

Wairarapa

- **880HA** Land
- **7,700** Stock Units

Glenside winters over 7,700 stock units on 880ha. It is the amalgamation of two properties (Glenside and Arahura) and is located in Gladstone, 20km south east of Masterton. Glenside farms sheep, beef and deer, with approximately 4,000 ewes and two-tooths, 200 beef cows and 350 mixed age breeding hinds (plus various replacements). Glenside offers a variety of stock work and general farm duties opportunities.

## Ballantrae

Manawatu

- **310HA** Land
- **2,500** Stock Units

Taratahi took on the lease of Ballantrae in March 2016. The farm is situated at the bottom of the Saddle Road about 5km from Woodville. It is medium to steep summer safe hill country and is 470ha total with 310ha effective. Ballantrae is running 2,500 stock units which is made up of 1,500 terminal ewes and 1,000 trading cattle. Ballantrae provides dairy support and runs bull beef. It has also been a part of a long standing fertiliser trial with AgResearch. Taratahi students who study at in Manawatu will use Ballantrae as their base for farm and practical experience.

## Telford

Balclutha

- **436HA** Land
- **3,750** Stock Units

Telford farm is situated on our Telford campus, and is located in South Otago, 6km from Balclutha.

### Sheep/Beef/Deer Unit –

The Sheep unit is compromised of 436ha (effective) gentle rolling country carrying 3,000 ewes plus 750 ewe hoggets, 24 beef R1's and 60-70 Hinds.

The Campus area covers approx. 20ha.

The farms operate on a commercial scale with these dairy, sheep, beef and deer operations. In addition to the farms there is student accommodation, technical workshops for machinery, carpentry, welding and fencing. Educational activities for the students are included into the farming operations on a regular basis.

## Puketapu Farm

Hawke's Bay

- **80HA** Land
- **650** Stock Units

Located 15 minutes from the Hawke's Bay campus this 80ha lease block is used as a fattening farm for cattle, and provides dairy support.







4

# LIFE ON CAMPUS

## WAIRARAPA CAMPUS

Masterton

Guidelines about expectations of students living at Taratahi are outlined in the Taratahi Student Regulations that is available on our website

**WWW.TARATAHI.AC.NZ.**

### Facilities

The residential facility is managed by staff 24-7 who provide support, advice and structure for students. We provide a safe and healthy environment for all our students – a home away from home. We have created a friendly, family-like atmosphere that complements students' studies and overall experience at Taratahi.

The campus has a swimming pool, games room with pool and table tennis tables, indoor gymnasium, outdoor basketball hoop and a lounge with Sky TV. Te Matatahi (Student Hub) is available for student use and free Wifi is available in all rooms.

Our kitchen staff provide three nutritious meals a day, seven days a week for all first year residential students and will cater for individual dietary requirements.

Students' rooms have a bed, desk, storage and heater and second year students are self sufficient in a flatting situation.

## Extra Curricula Activities

Staff organise a variety of activities for students to participate in during evenings and weekends, which may include sports activities, quiz nights, movie nights, cooking competitions, board games nights, excursions to Wellington and other local events, workshops to enhance self-management skills and evening classes.

The Wairarapa region is perfect for hunting and fishing and students are encouraged to organise these activities during weekends and staff will facilitate transport. Occasionally staff will organise excursions for groups who are keen to learn new skills.

### Student Council

Students living on campus elect Student Council members. The Council meets regularly to discuss and tackle issues relating to campus life on behalf of all students. Meetings are minuted and members take up positions such as Chair and Secretary. This is a great opportunity for students to learn leadership and negotiation skills and build confidence.

### Pastoral Care

Outside of everyday requirements around health, wellbeing and learning assistance that residential staff can assist students with, specialist student support staff are available to students who require additional attention and care, and students are appropriately referred by residential staff as required.





# TELFORD CAMPUS

Balclutha

## Halls of residence

The halls of residence provide a fully-supervised, relaxed environment where it's easy to make friends and have loads of fun. Set amongst spacious, landscaped grounds, the halls are a short walk from the workshops, classrooms and other teaching facilities.

We provide fully-furnished, single rooms (with the choice of ensuite or shared bathroom facilities), on a five or seven-day basis.

Students will receive morning tea and three meals a day.

Overnight supervision is provided at the hostel by one of the Hostel Supervisors, on duty between 5.00pm and 9.00am week nights, and 24 hours each weekend, with regular security checks undertaken during the evening. The Hostel Manager is housed on campus.

Residential Assistants (RA) complement this mix. To be eligible for RA selection students should hold a full drivers licence and be prepared to provide peer support.

To find out more about the costs of on-campus accommodation, visit:

**WWW.TELFORD.AC.NZ.**

## We also provide

- Sky TV, DVD player and wi-fi
- Various sporting and social activities
- Tennis court, rugby field, gymnasium, weights room
- Pool table
- Evening access to the computer suite and tutor support
- Free airport transfers for all holiday periods
- We recommend that you apply early for your place in the halls of residence by completing the application form
- The Telford Practice Nurse is available on campus two days a week

Off-campus students are encouraged to participate in the evening tutorial sessions at least

once or twice per week, and are able to purchase meals from the dining room (ticket system). This means less travel time and cost, and is very beneficial to the student learning experience.

## IT Services

The campus has two well-equipped computer suites with 50 computers for the use of all students. They are open from 7.00am – 10.00pm every day during term time.

There is a wireless network available 24 hours a day throughout the Halls of Residence. The system is designed to work with any WiFi capable computer, phone or tablet. A cap of 2GB of data is provided free of charge each month. More data may be purchased through PayPal or by using top-up tickets available from reception in the Stone House.

## A world of adventure on your doorstep

Telford is set in a rural outdoor environment just one hour's drive from Dunedin. If you love the outdoors, South Otago is an adventure playground that provides endless possibilities for 'getting out there'.

Here are just a few activities that are available:

- Playing rugby for a community team
- Playing netball for Telford
- Pig, goat and deer hunting
- Lake and sea fishing
- Motocross
- Jet boating
- 4 x 4 off-road adventures
- Mountain bike and downhill riding
- Young Farmers Club
- Flying with the local Aero Club
- Local pony clubs and competitions
- Trap and small bore shooting clubs
- Bush walks
- Diving and surfing
- Golf (a selection of nine and 18-hole courses)
- Local touch 7s, tennis and soccer clubs

- Archery
- The Southern Scenic Route
- Snowboarding and skiing in Queenstown and Wanaka
- Watching sea lions, seals, yellow-eyed penguins and native birds in their natural habitat

## Library, Teaching & Learning Services

The Neville Moffat Library is located in the former Stables building. The Library has over 3000 books and journals, and receives a wide range of industry and research magazines, with a particular focus on agriculture, apiculture, botany, dairy, equine, forestry and horticultural texts which relate to the New Zealand context. The Library also has an extensive range of DVDs and videos.

There are also networked computers, DVD player, and photocopying facilities. The Library provides a very quiet location for individual or group study and is open a half day each week day, however access is readily available at other times by arrangement.

The Student Support Team are available to assist all students who may need extra help with aspects of their written work or assessments. Literacy and numeracy assistance is arranged in discussion between the Student Support Team, tutor/s and yourself. Literacy support includes IT support services.

## Hostel Supervisor

Hostel and after hours student supervision is the responsibility of the Hostel Supervisor. Student interaction and rapport are his top priorities, making sure students' needs are met in terms of their physical environment, with behaviour being closely monitored. Familiarity with the assessment timetable ensures wrap around support.





# LIVING ON CAMPUS FAQ'S

## Wairarapa Residential Campus

### Does the Wairarapa have to offer after hours?

The Wairarapa offers a wide range of outdoor and sporting activities including tramping, hunting and fishing. Masterton has a good sized town centre providing shopping, a movie theatre, a library and recreational facilities.

### Can I keep a vehicle at Taratahi?

Students with restricted or full licences can apply to keep a vehicle on campus. Application forms are available from office or residential staff.

### How to I get to and from town if I don't have a vehicle?

Regular trips are made to Masterton for supplies and students are taken to appointments they may have.

### Are all the meals provided?

Our kitchen staff provide three nutritious meals a day, seven days a week for all first year residential students and will cater for individual dietary requirements. Second year students have the option of sharing self-catering houses on campus in a flatting situation.

### Can I bring a work dog to Taratahi?

Sheep and beef students are usually given the option to bring a dog after they have completed two terms of their programme. It is expected the dog is under command and has all of its vaccinations and registration completed before arriving at Taratahi. Approval from the Residential Manager is required and the process for approval will be outlined upon request.

### How do I keep in touch with family and friends?

Taratahi has a computer suite and access to telephones, email and Internet. Free WiFi is available on campus.

## Telford Residential Campus

### Can I bring my own car to Telford?

Yes, provided you have a valid driver's licence, current registration and Warrant of Fitness, plus up-to-date insurance. Students who do not follow policy conditions may be asked to remove vehicles, or their vehicles may be impounded. Please indicate your intention to bring a car on the enrolment form.

### Can I bring a dog to train during the year?

Yes, but no dogs are initially allowed on campus. It's a privilege and you should make enquiries with the Farm Office shortly after your course begins. Due to the limited number of kennels available, they are allocated on the basis of commitment to study. When training begins in Term Two, it's recommended pups are between 3 – 12 months old, with up-to-date vaccinations.

### I'm enrolling in the equine programme. Can I bring my own horse?

Yes, you can bring your own horse, or lease one during the year. Conditions apply. Please contact the Equine Tutor to determine the suitability of your horse. Travel costs incurred in bringing a horse to Telford are your responsibility.

### Do I have to attend all classes?

Yes, attendance at class and work experience is compulsory, unless in the case of illness. Students must also be on time for class.

### What books and equipment am I required to bring?

A list of all items is shown in the 'Getting Started Guide' which will be sent to you upon your successful enrolment at Telford; stationary may also be purchased from Telford reception.

### What is work experience?

This is your opportunity to put your learning into practice on farm. Telford organise all placements on either the Telford Farm or with our host farmers. Transport is provided both ways, and students are either boarding with the farmer, or may be in single accommodation and have to undertake their own cooking.

### Where will I live during term time?

Telford provides on-campus accommodation in our halls of residence. There are room options available – single with your choice of ensuite or shared bathroom. All rooms and

living areas are cleaned by our cleaners. Meals are prepared, cooked and supplied by our on-campus caterers.

We recommend that you apply early to ensure a place.

Students may also choose to board or flat in the district. This is a great option for students who want to live independently. If you are planning to go flatting, please do not sign up to a place before you have seen it. We suggest you book temporary accommodation before your arrival and then look. A great place to start your search for a flat is TradeMe, or try notice boards around campus.

### Are there recreation areas?

Telford offers a full-sized gymnasium (with marked courts and weight training room), pool table, paintball, sports field and tennis court. Telford is situated close to rivers and the coastline for fishing, as well as mountains and bush for skiing, hunting and tramping. South Otago also offers excellent opportunities to join local sports teams.

### Can someone pick me up at the airport?

Yes, at the beginning and end of each term Telford offers a free pick-up service to and from Dunedin Airport, and Balclutha bus terminals. Should you wish to travel to the airport during term time a charge will be made to cover costs.

### Is there Internet availability in the halls of residence?

Yes, the halls of residence have wi-fi available. 2GB of data is free of charge per month, additional data has to be paid for.

### Can I visit Telford to see what it's like?

Yes, please phone us on **0800 835 367** to arrange a suitable date and time to visit.

Our campus extends over 670 hectares of farmland with halls of residence and facilities, technical workshops (machinery, carpentry and welding), classrooms and livestock units.



# ENROLMENT



## HOW TO...

4

### Request an application pack

For an application pack, which will include an application for enrolment form, please contact us either via email:

**INFO@TARATAHI.ac.nz**

or give us a call on:

**0800 TARATAHI  
(0800 827 2824)**

### The application process

1. Fill in an application for enrolment form either on paper or online at our website - **WWW.TARATAHI.AC.NZ/ENROL-FORM** or from the programmes page click on 'Enrol in this programme'. Please contact us if you need assistance with the application for enrolment process.
2. You will be notified that your application for enrolment has been received. At this point, if you need to provide further information to us we will discuss this with you. Please note that we cannot process your application for enrolment without all the necessary supporting, verified documentation.
3. Your application for enrolment will then be assessed by Taratahi.
4. You will be interviewed by a Taratahi member of staff. This interview could be in person, on the phone or by video call depending on your location.
5. Following your interview, you will be informed of Taratahi's decision.





6. If you are accepted you will need to organise payment of your fees.

Please note that Taratahi's programmes do fill up quickly, so please get your application for enrolment form and required documentation in early.

## Apply for halls of Residence

If you wish to live on either the Wairarapa or Telford campus, you will need to complete the section within the application for enrolment form at the same time as applying to enrol in a programme.

Your place in the residential campus will be confirmed upon acceptance of your application and payment of bond, activity fee and one week's rent in advance. You must have a confirmed place in the residential campus prior to your arrival at the commencement of your programme in order for you to live in the residential facility.

By choosing the Wairarapa or Telford Campus as an option on the online application for enrolment form, you will be able to see fields relevant to your application to stay on the campus.

### Selection Criteria

The following criteria is used to select Taratahi students for a full-time programme:

- That you are eligible for the entry criteria which can be found in the programme description
- You have an interest in the chosen field of study i.e. agriculture, apiculture or equine
- References

### Course Acceptance

Potential Taratahi students for any of our programmes will first be considered upon your likelihood of success in the programme. We may set some prerequisites such as attending a Taster course, providing additional information or agreeing to a study contract.

## Enrol at Taratahi

Once you have met the enrolment criteria, Taratahi is able to accept you on to a programme of study and you will receive an Offer of Place letter from us.

For programmes which have limited spaces, you may be required to wait until the closing date before being advised whether your application has been accepted.

### For the following programmes:

- New Zealand Certificate in Agriculture **(Level 3)**
- National Certificate in Equine Skills **(Sporthorse Stable Assistant – Level 3)**
- New Zealand Certificate in Agriculture **(Level 4)**
- Diploma in Agriculture **(Level 5)** or
- Central North Island Dairy Academy

### The following documentation is also required:

- School report
- 100 word letter explaining why you want to enrol
- Written references x 2
- Passport photo
- A copy of your driver's licence (if you have one)

## FEES, LOANS & ALLOWANCES

Please note that these fees relate specifically to accommodation and other costs relating to the Wairarapa campus only. For information about programme fees, please refer to the information for the relevant programme. For information about our fees policy, as well as withdrawals and refunds please contact the Taratahi regional office relevant to your programme.

You are encouraged to apply for loans and allowances as soon as you apply to enrol at Taratahi so that your account is ready to be activated as soon as your enrolment is confirmed. This will ensure that your fees are paid prior to you starting at Taratahi and that your living costs are paid

to coincide with the week you commence study.

### Compulsory Student Services Fee: (CSSF)

The Compulsory Student Services Fee (CSSF) is a levy that will be charged to domestic and international students enrolled at Taratahi. This fee will be included in your invoice, and can be paid through Studylink, and is also eligible for fees free study\*. The CSSF will support student services that aren't covered by tuition fees, such as health services, added student services, student support, etc.

Visit [WWW.TARATAHI.AC.NZ](http://WWW.TARATAHI.AC.NZ) for more information.

\*Visit: [WWW.FEESFREE.GOV.NZ](http://WWW.FEESFREE.GOV.NZ) for eligibility criteria and more details.



ARRANGEMENT (WAIRARAPA CAMPUS)	COST
Level 3 residential student	\$285 per week
Level 3 day student*	\$25 per week for lunches \$285 per week when on residential farm
Level 4 student (22 weeks) Level 5 student (32 weeks)	\$150 per week, self catered \$285 per week, fully catered
Student recreation fee <b>(Residential Students only)</b>	\$100 per annum
LEVEL 3, 4 & 5 – Hostel bond	\$500 per annum

\*Includes lunch Monday to Friday and accommodation when rostered on FARM STAY AWAY. For Telford Campus Costs, visit [www.telford.ac.nz](http://www.telford.ac.nz)





# SCHOLARSHIPS

Taratahi students can apply for a range of scholarships to assist with paying fees and/or accommodation at Taratahi. The following list highlights the many scholarship opportunities that are available.

## Taratahi Scholarships and Bursaries

- Beef and Lamb New Zealand
- Carterton District Council
- DairyNZ Excellence Award
- Doris Elizabeth Swadling Trust
- Edmond Sanderson Jeff Farm Scholarships – Salvation Army
- Elsie and Laura Lehmann Trust
- FMG (**Level 3 and/or Level 4**)
- Harwood Farm Trust Scholarship
- Janine Young Memorial Award
- JE Prestidge Trust Scholarship
- Kiley Family Memorial Trust
- L. A. Alexander Agricultural College Trust Board Inc
- LW Nelson Agricultural Scholarship
- Māori & Pasifika Trades Training Initiative
- Māori Education Foundation – Agricultural Scholarships
- Margaret Bashford Scholarship
- Meridian Energy (**Level 3 and Level 4/5**)
- Parininihi Ki Waitōtara Trust
- Peter Laing Memorial Trust
- PGG Wrightson/Taratahi Scholarship (**Level 3**)
- PGG Wrightson/Taratahi Scholarship (**Level 4 and/or 5**)
- Putaruru Veterinary Club Education Trust
- Ray White Allens Education Foundation
- Regina Rudland Memorial Scholarship
- Richard Mills – Taratahi Scholarship
- Robert Gibson Methodist Trust Board
- Rotary Club North Wellington
- Rotary Club of South Wairarapa

## Taratahi Scholarships and Bursaries (Cont.)

- Royce Nicholls Trust Scholarship
- Rural Women NZ  
Refer to: **WWW.RURALWOMEN.ORG.NZ/SERVICES/BURSARIES**
- Sargent Motorcycles
- Silver Fern Farms Plate to Pasture Scholarship
- Stihl Shop
- Stratford High School – Craig Scholarship
- Sydney Campbell Undergraduate Scholarship
- Te Pukea Whakatupu Trust
- The Ann Sinclair Charitable Trust
- The New Zealand Charolais Cattle Society
- Wairarapa Rural Women New Zealand
- Wairere / Taratahi Scholarship
- Westpac
- Whangarei A&P Society

## Telford Specific Scholarships and Bursaries

- Edmund Sanderson Jeff Farm Training Award (**For Certificate or Diploma Year, Excludes Equine**)
- Peter Wilding Estate Scholarship (**For Certificate or Diploma Year**)
- Westpac Trust Bursary (**For Certificate in Agriculture Students**)
- Delaval Bursary
- Clutha Vets Association Scholarship
- Clutha District Council Bursary (**For Certificate or Diploma Year**)
- Greenfield Rural Opportunities (**For Certificate or Diploma Year**)
- South Otago Farm Forestry Association Bursary (SOFFA)
- Telford Gowrie Trust (**For Certificate or Diploma Year**)
- Rotary of Dunedin
- Taieri Rotary Club/Taieri Lions Club Bursaries
- BNZ - Bank of New Zealand
- Alliance Group Limited

### Correspondence Bursaries:

- Ecroyd Beekeeping New Zealand

## Other Scholarships and Bursaries

- Growing New Zealand
- The Waimate Agricultural Trust
- Taranaki Careers and Training Expo trust
- Maori Education Trust
- Farmlands Co-operative – Tom Cranswick Memorial Trust
- Tuapeka County Bursary



Local scholarships may also be available for your district, and we strongly suggest that you visit your School or local library where you can gain access to a scholarship database:

**HTTP://GENEROSITY.ORG.NZ/**





## FREQUENTLY ASKED QUESTIONS (GENERAL)

### I don't have any farming experience. Can I still apply for a programme?

Yes, give us a call on **0800 TARATAHI**. What we are looking for is someone who is passionate and motivated about a career in agriculture whether they have lots of experience or none at all.

If you are aged between 16 - 18, we also suggest you attend one of our Taster courses so that you can be sure of your decision.

Attending a Taster course will also help us recommend the right programme for you.

### Do you provide accommodation at all campuses?

The only fully residential option is at Taratahi's Wairarapa and Telford campuses and details about these are on pages 74-77.

### Do I need a driver's licence?

We encourage students to have or gain their restricted licence by the end of their programme of study so they can travel to and from work once they gain employment.

### Does Taratahi cater for students with reading or writing difficulties?

Taratahi can facilitate external support for learners with diagnosed specific learning difficulties. Literacy and numeracy is embedded into our programmes and tutors are available some evenings to assist students who struggle with reading and writing (Wairarapa

only). Some assessments can be oral, if preferred, and others with a reader/writer.

### Do you have policies and procedures in place for students?

Yes, students may be interested in reading the following policies, which are available on our website:

- Taratahi Students Regulations
- Taratahi Concerns, Complaints and Compliments Policy
- Taratahi Drug Free campus and Substance Abuse Policy
- Taratahi Alcohol Policy
- Taratahi Harassment, Bullying and Discrimination Policy
- Taratahi Privacy Policy

### What equipment will I need to bring with me?

A full gear list will be sent out with your enrolment pack.

## Student Support

Regardless of where you study, staff will facilitate students' access to support for specific learning disorders, counselling, health and wellbeing, disability, cultural needs and hardship if required.

### Do you have support services available to students?

Yes we do.

Te Matatahi is our student support centre where students can access support, study spaces and a PC lab. Students can be referred or can self-refer to Student Support Services for support in the following areas:

- Learning support for diagnosed specific learning disorders such as dyslexia, dyspraxia ADHD, ADD, Irlen Syndrome
- Counselling
- Health and wellbeing
- Disability
- Maori and Pasifika
- Hardship and financial advice
- Career advice and job seeker skills

Students are encouraged to seek assistance as soon as possible after they apply to enrol at Taratahi as early intervention with appropriate support will complement and enhance academic progress.

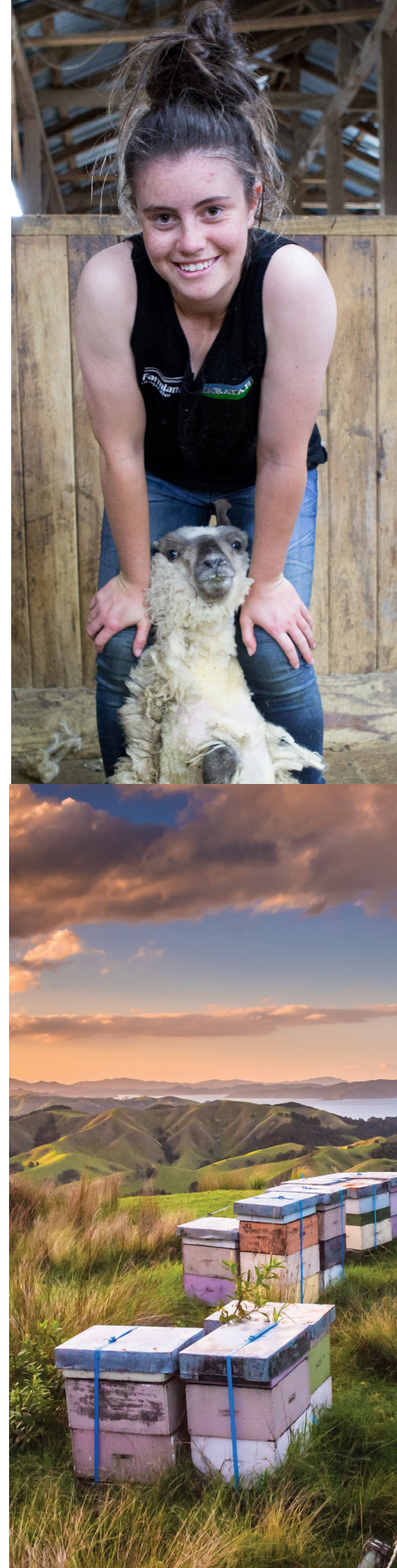
Taratahi's Student Support Policy is available to view on our website:  
**WWW.TARATAHI.AC.NZ**

### How do I pay my fees?

Taratahi offers various payment options at enrolment. These are fully discussed when you apply and include payment in full, or instalments by automatic payment.

### Are there any scholarships to help pay for my fees?

Please see page 83-84 for more information about scholarships or visit  
**WWW.TARATAHI.AC.NZ**



# OUR VALUES

## TE KAITĀTAKI LEADERSHIP

We lead from the front, providing insight and knowledge to encourage, inspire, motivate, reassure and instill confidence in our students. We are passionate about leading students on their pathway to success.

## KAITIAKITANGA GUARDIANSHIP

We work to sustain, protect, nurture and grow New Zealand's farming capability for the success of all. We are keepers of the land, leaving our environment in a better place for future generations of farmers. Our work is built on sustainable, commercial farming practices.

## TAONGA TUKU LEGACY

We have a proven track record of making a difference to the lives of people, their families and wider society. We educate and up-skill people, enabling them to grow and succeed.

## MANAWA WHAKAHĪ PRIDE

We are proud of our work and respect each other. Together we build on our reputation as a trusted and credible training provider to deliver world class training programmes.

## ANGA WHAKAMUA FUTURE FOCUS

We are open minded, we embrace new ideas and new ways of approaching farming challenges. We create and foster a culture of innovation to shape the future and transform New Zealand's primary industries. We think differently and that's why people look to us for insights.

## KOTAHITANGA ONE TEAM

We work together to achieve a common goal, sharing our knowledge, expertise and wisdom. We collaborate to make things happen while having fun along the way.



# CAMPUS CONTACTS

---

## Northland

Level 1, 35E Commerce Street,  
Whangarei 0110

**T** 0800 TARATAHI  
**E** [info@taratahi.ac.nz](mailto:info@taratahi.ac.nz)

## Auckland

Manukau Institute of  
Technology. NH Building,  
Gate 13, Alexander Cres,  
Otara, Auckland 2023

**T** 0800 TARATAHI  
**E** [info@taratahi.ac.nz](mailto:info@taratahi.ac.nz)

## Waikato / Bay of Plenty

83 Princes St, Putaruru

**T** 0800 TARATAHI  
**E** [info@taratahi.ac.nz](mailto:info@taratahi.ac.nz)

## Taranaki/Whanganui

343 – 345 Broadway,  
Stratford 4352

**T** 0800 TARATAHI  
**E** [info@taratahi.ac.nz](mailto:info@taratahi.ac.nz)

## Hawke's Bay

c/o Eastern Institute of  
Technology, Private Bag  
1201, Napier 4142  
502, Gloucester St,  
Taradale, Napier

**T** 0800 TARATAHI  
**E** [info@taratahi.ac.nz](mailto:info@taratahi.ac.nz)

## Manawatu

**T** 0800 TARATAHI  
**E** [info@taratahi.ac.nz](mailto:info@taratahi.ac.nz)

## Wairarapa (National Office)

529 Cornwall Road, RD7  
Masterton 5887

**T** 0800 TARATAHI (827 2824)  
**E** [info@taratahi.ac.nz](mailto:info@taratahi.ac.nz)

## Telford

498 Owaka Highway  
Balclutha, Otago 9240

**T** 0800 TELFORD  
**E** [enquiry@telford.ac.nz](mailto:enquiry@telford.ac.nz)

## Southland

Block G10, Southern  
Institute of Technology  
150 Tay Street  
Invercargill 9840

**T** 0800 TARATAHI  
**E** [info@taratahi.ac.nz](mailto:info@taratahi.ac.nz)

---

## ENROL NOW

**TARATAHI.AC.NZ**

0800 TARATAHI  
[INFO@TARATAHI.AC.NZ](mailto:INFO@TARATAHI.AC.NZ)

---

Kick start your career in  
agriculture at New Zealand's  
leading Agricultural Training  
Institute.

---

[facebook.com/taratahi](https://facebook.com/taratahi)  
[twitter.com/@taratahiNZ](https://twitter.com/@taratahiNZ)  
[instagram.com/taratahi](https://instagram.com/taratahi)



**TARATAHI**

INSTITUTE OF AGRICULTURE

TE PŪTAHI AHUWHENUA